

DATASHEET

Growth Hormone Mouse Monoclonal Antibody(ARB963)

CAT. NO. ARB6755

KEY FEATURES

Target	Growth Hormone	Clonality	Monoclonal
Clone ID	ARB963	Applications	IHC
Source / Host	Mouse	Dilution	1:100-1:200
Reactivity	Human	Storage	at-20°C

BACKGROUND

Growth hormone (GH), somatotropin, is the primary hormone responsible for regulating overall body growth and is also important in organic metabolism. It is synthesized by acidophil or somatotropic cells of the anterior pituitary gland. GH stimulates growth indirectly by promoting the liver's production of somatomedins, which act directly on bone and soft tissue to cause growth. GH exerts direct metabolic effects on the liver, adipose tissue and muscle. In general, growth hormone enhances protein synthesis, conserves carbohydrates and uses up fat stores. Human Growth Hormone (hGH) is recommended for the detection of specific antigens of interest in normal and neoplastic tissues, as an adjunct to conventional histopathology using non-immunologic histochemical stains.

APPLICATION

To ensure optimal assay performance, AREX recommends conducting reagent titration tailored to each testing system for optimal detection results.

IHC	1:100 - 1:200
-----	---------------

*Results are sample-specific. Please refer to your local assay conditions and test parameters for reference.

PRODUCT OVERVIEW

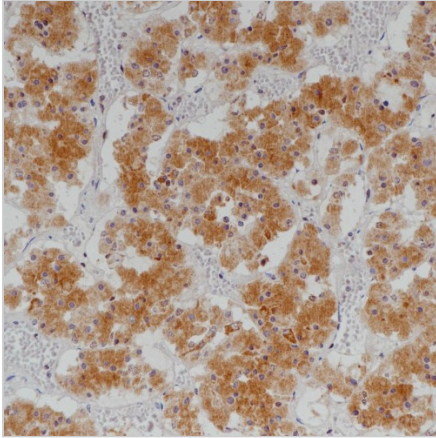
Predicted Molecular Wt	25kDa
Purity	ProA affinity purified IgG
Subcellular location	Cytoplasm
Swissprot ID	P01241
Immunogen	Synthetic peptide corresponding to Human Growth Hormone protein was used as an immunogen. The exact sequence is proprietary.
Storage Buffer	PBS 59%, Sodium azide 0.01%, Glycerol 40%, BSA 0.05%
Recommended method	Heat induced epitope retrieval with Tris-EDTA buffer (pH 9.0), primary antibody incubate at RT (18°C-25°C) for 30 minutes

*AREX continuously optimizes our products. Webpage content may not reflect the latest updates. For inquiries, please contact info@arexbio.com or your local distributor.

*Clone Number, Reactivity, Source/Host and Clonality can be found in the product name and Key Features section above.

DATASHEET**Growth Hormone Mouse Monoclonal Antibody(ARB963)**

CAT. NO. ARB6755

DATA

Immunohistochemical staining of human anterior pituitary tissue using Growth Hormone Mouse Monoclonal Antibody(ARB963)

STORAGE

Store at 4°C short term. For long term storage, store at -20°C, avoiding freeze/thaw cycles.

NOTE

For Research Use Only. Not for diagnostic, therapeutics, prophylactic or in vivo use.

More information: www.arexbio.com