

DATASHEET

Glypican-3 Rabbit Monoclonal Antibody(ARB961)

CAT. NO. ARB6753

KEY FEATURES

Target	Glypican-3	Clonality	Monoclonal
Clone ID	ARB961	Applications	IHC
Source / Host	Rabbit	Dilution	1:100-1:200
Reactivity	Human	Storage	at-20°C

BACKGROUND

Glypican 3, also known as GPC3, is a human gene. The protein encoded by this gene is a member of the glypican family. Cell surface heparan sulfate proteoglycans are composed of a membrane - associated protein core substituted with a variable number of heparan sulfate chains. Members of the glypican - related integral membrane proteoglycan family (GRIPS) contain a core protein anchored to the cytoplasmic membrane via a glycosyl - phosphatidylinositol linkage. These proteins may play a role in the control of cell division and growth regulation. Glypican - 3 antibody has been identified to be a useful tumor marker for the diagnosis of Hepatocellular Carcinoma (HCC), Hepatoblastoma, Melanoma, Testicular Germ Cell Tumors, and Wilms Tumor. In patients with HCC, GPC3 was overexpressed in neoplastic liver tissue and detected in serum but was undetectable in normal liver, benign liver, and the serum of healthy donors. GPC3 expression was also found to be higher in HCC liver tissue than in cirrhotic liver or liver with focal lesions such as dysplastic nodules and areas of hepatic adenoma (HA) with malignant transformation. Glypican - 3 antibody is mainly used in clinical diagnosis of hepatocellular carcinoma.

APPLICATION

To ensure optimal assay performance, AREX recommends conducting reagent titration tailored to each testing system for optimal detection results.

IHC	1:100 - 1:200
-----	---------------

*Results are sample-specific. Please refer to your local assay conditions and test parameters for reference.

PRODUCT OVERVIEW

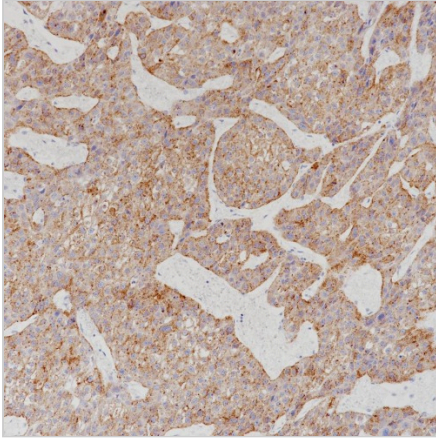
Predicted Molecular Wt	66 kDa
Purity	ProA affinity purified IgG
Subcellular location	Cytoplasm
Swissprot ID	P51654
Immunogen	Synthetic peptide of Glypican-3
Storage Buffer	PBS 59%, Sodium azide 0.01%, Glycerol 40%, BSA 0.05%
Recommended method	Heat induced epitope retrieval with Tris-EDTA buffer (pH 9.0), primary antibody incubate at RT (18° C-25° C) for 30 minutes.

*AREX continuously optimizes our products. Webpage content may not reflect the latest updates. For inquiries, please contact info@arexbio.com or your local distributor.

*Clone Number, Reactivity, Source/Host and Clonality can be found in the product name and Key Features section above.

DATASHEET**Glypican-3 Rabbit Monoclonal Antibody(ARB961)**

CAT. NO. ARB6753

DATA

Immunohistochemical staining of human liver cancer tissue sections using Glypican-3 Rabbit Monoclonal Antibody (ARB961).

STORAGE

Store at 4°C short term. For long term storage, store at -20°C, avoiding freeze/thaw cycles.

NOTE

For Research Use Only. Not for diagnostic, therapeutics, prophylactic or in vivo use.

More information: www.arexbio.com