

## DATASHEET

# GCDFP-15 Rabbit Monoclonal Antibody(ARB958)

CAT. NO. ARB6750

### KEY FEATURES

Target	GCDFP-15	Clonality	Monoclonal
Clone ID	ARB958	Applications	IHC
Source / Host	Rabbit	Dilution	1:100-1:200
Reactivity	Human	Storage	at-20°C

### BACKGROUND

GCDFP is a prolactin-induced, secretory, actin-binding cytoplasmic protein, also designated glycoprotein (gp). The cells within the body that produce GCDFP-15 appear to be restricted primarily to those with an apocrine function. It has been reported that cytosolic analysis of normal tissue from all major organs has demonstrated GCDFP15 in apocrine epithelia, lacrimal, ceruminous and Moll's glands and in numerous serous cells of the submandibular, tracheal, bronchial, sublingual and minor salivary glands. Cytosol from breast carcinoma lesions are reported to contain GCDFP15 at a wide range of concentrations. The concentration is reported to be highest in more differentiated carcinomas and GCDFP15 shows only a few positive individual epithelial cells within lobules and small ducts in normal breast. Expression has also been reported in fibroadenomas within areas of apocrine metaplasia.

### APPLICATION

To ensure optimal assay performance, AREX recommends conducting reagent titration tailored to each testing system for optimal detection results.

IHC	1:100 - 1:200
-----	---------------

\*Results are sample-specific. Please refer to your local assay conditions and test parameters for reference.

### PRODUCT OVERVIEW

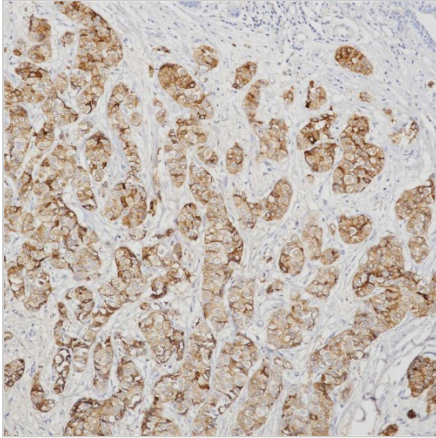
Predicted Molecular Wt	17kDa
Purity	ProA affinity purified IgG
Subcellular location	Cytoplasmic
Swissprot ID	P12273
Immunogen	Synthetic peptide corresponding to residues within aa1-100 of GCDFP-15 was used as an immunogen
Storage Buffer	PBS 59%, Sodium azide 0.01%, Glycerol 40%, BSA 0.05%
Recommended method	Heat induced epitope retrieval with Tris-EDTA buffer (pH 9.0), primary antibody incubate at RT (18°C-25°C) for 30 minutes

\*AREX continuously optimizes our products. Webpage content may not reflect the latest updates. For inquiries, please contact [info@arexbio.com](mailto:info@arexbio.com) or your local distributor.

\*Clone Number, Reactivity, Source/Host and Clonality can be found in the product name and Key Features section above.

**DATASHEET****GCDFP-15 Rabbit Monoclonal Antibody(ARB958)**

CAT. NO. ARB6750

**DATA**

Immunohistochemical staining of human breast carcinoma tissue using GCDFP-15 Rabbit Monoclonal Antibody(ARB958)

**STORAGE**

Store at 4°C short term. For long term storage, store at -20°C, avoiding freeze/thaw cycles.

**NOTE**

For Research Use Only. Not for diagnostic, therapeutics, prophylactic or in vivo use.

More information: [www.arexbio.com](http://www.arexbio.com)