

DATASHEET

FR α Rabbit Monoclonal Antibody(ARB955)

CAT. NO. ARB6747

KEY FEATURES

Target	FR α	Clonality	Monoclonal
Clone ID	ARB955	Applications	IHC
Source / Host	Rabbit	Dilution	1:100-1:200
Reactivity	Human	Storage	at-20°C

BACKGROUND

The folate receptor alpha (FR α) is a glycosylphosphatidylinositol - linked cell surface glycoprotein that has high affinity for folate and folic acid analogs at neutral pH. It is a member of the folate receptor family, which includes the isoforms FR α , FR β (72% identity), FR γ (68% identity). FR α binds to folate and reduced folic acid derivatives and mediates delivery of 5 - methyltetrahydrofolate and folate analogs into the interior of cells. Also, it has been required for normal embryonic development and normal cell proliferation. Most normal tissues do not express FR α , it is exclusively expressed in tissues of epithelial origin, such as kidney, lung and cerebellum. FR α has high levels in serous and endometrioid epithelial ovarian cancer (OC), endometrial adenocarcinoma, and non - small cell lung cancer (NSCLC) of the adenocarcinoma subtype. Several features of FR α make it an attractive target for cancer immunotherapy and marker for the diagnosis of cancer: (i) it is largely shielded from the immune system in normal tissues; (ii) it becomes exposed when overexpressed on a variety of malignancies; and (iii) it is functionally active in cancer pathogenesis and is immunogenic.

APPLICATION

To ensure optimal assay performance, AREX recommends conducting reagent titration tailored to each testing system for optimal detection results.

IHC	1:100 - 1:200
-----	---------------

*Results are sample-specific. Please refer to your local assay conditions and test parameters for reference.

PRODUCT OVERVIEW

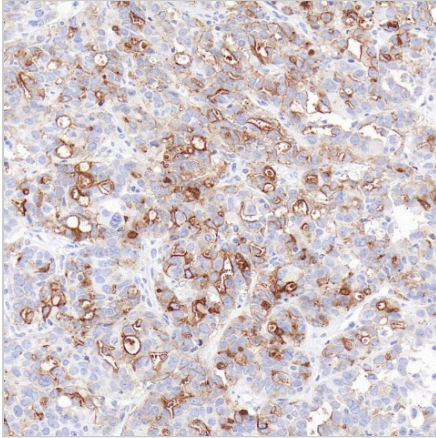
Predicted Molecular Wt	30kDa
Purity	ProA affinity purified IgG
Subcellular location	Cell membrane, cytoplasm
Swissprot ID	P15328
Immunogen	Recombinant protein.
Storage Buffer	PBS 59%, Sodium azide 0.01%, Glycerol 40%, BSA 0.05%
Recommended Method	Heat induced epitope retrieval with Tris-EDTA buffer (pH 9.0), primary antibody incubate at RT (18°C-25°C) for 30 minutes

*AREX continuously optimizes our products. Webpage content may not reflect the latest updates. For inquiries, please contact info@arexbio.com or your local distributor.

*Clone Number, Reactivity, Source/Host and Clonality can be found in the product name and Key Features section above.

DATASHEET**FR α Rabbit Monoclonal Antibody(ARB955)**

CAT. NO. ARB6747

DATA

Immunohistochemical staining of human ovarian carcinoma tissue using FR α Rabbit Monoclonal Antibody(ARB955)

STORAGE

Store at 4°C short term. For long term storage, store at -20°C, avoiding freeze/thaw cycles.

NOTE

For Research Use Only. Not for diagnostic, therapeutics, prophylactic or in vivo use.

More information: www.arexbio.com