

DATASHEET

FOXP3 Rabbit Monoclonal Antibody(ARB954)

CAT. NO. ARB6746

KEY FEATURES

Target	FOXP3	Clonality	Monoclonal
Clone ID	ARB954	Applications	IHC
Source / Host	Rabbit	Dilution	1:100-1:200
Reactivity	Human	Storage	at-20°C

BACKGROUND

Forkhead box (Fox) proteins are a family of evolutionarily conserved transcription factors containing a sequence known as Forkhead or Winged helix DNA binding domain. The human genome contains 43 Fox proteins that are divided into subfamilies. The FoxP subfamily has four members, FoxP1 - FoxP4, which are broadly expressed and play important roles in organ development, immune response, and cancer pathogenesis. FoxP proteins usually function as transcriptional repressors. FOXP3 is expressed in activated T lymphocytes in tonsil in adult, T cell leukemia or lymphoma.

APPLICATION

To ensure optimal assay performance, AREX recommends conducting reagent titration tailored to each testing system for optimal detection results.

IHC	1:100 - 1:200
-----	---------------

*Results are sample-specific. Please refer to your local assay conditions and test parameters for reference.

PRODUCT OVERVIEW

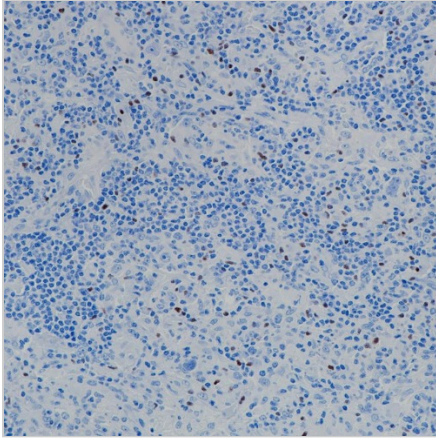
Predicted Molecular Wt	47 kDa
Purity	ProA affinity purified IgG
Subcellular location	Nucleus
Swissprot ID	Q9BZS1
Immunogen	Recombinant fragment of human FOXP3
Storage Buffer	PBS 59%, Sodium azide 0.01%, Glycerol 40%, BSA 0.05%
Recommended method	Heat induced epitope retrieval with Tris-EDTA buffer (pH 9.0), primary antibody incubate at RT (18° C-25° C) for 30 minutes.

*AREX continuously optimizes our products. Webpage content may not reflect the latest updates. For inquiries, please contact info@arexbio.com or your local distributor.

*Clone Number, Reactivity, Source/Host and Clonality can be found in the product name and Key Features section above.

DATASHEET**FOXP3 Rabbit Monoclonal Antibody(ARB954)**

CAT. NO. ARB6746

DATA

Immunohistochemical staining of human Hodgkin lymphoma tissue sections using FOXP3 Rabbit Monoclonal Antibody (ARB954).

STORAGE

Store at 4°C short term. For long term storage, store at -20°C, avoiding freeze/thaw cycles.

NOTE

For Research Use Only. Not for diagnostic, therapeutics, prophylactic or in vivo use.

More information: www.arexbio.com