

DATASHEET

Estrogen receptor beta Rabbit Monoclonal Antibody(ARB950)

CAT. NO. ARB6742

KEY FEATURES

Target	Estrogen receptor beta	Clonality	Monoclonal
Clone ID	ARB950	Applications	IHC
Source / Host	Rabbit	Dilution	1:100-1:200
Reactivity	Human	Storage	at-20°C

BACKGROUND

Estrogen receptors (ER) are members of the steroid/thyroid hormone receptor superfamily of ligand-activated transcription factors. Estrogen receptors, including ER-alpha and ER-beta, contain DNA binding and ligand binding domains and are critically involved in regulating the normal function of reproductive system tissues. ER-beta is expressed in tissues of the female reproductive system, such as ovaries and mammary glands. The role of ER-beta in various cancer types is controversial, but it is generally thought to be a tumor suppressor. Absence of ER-beta has been shown to be a marker of poor prognosis in breast cancer.

APPLICATION

To ensure optimal assay performance, AREX recommends conducting reagent titration tailored to each testing system for optimal detection results.

IHC	1:100 - 1:200
-----	---------------

*Results are sample-specific. Please refer to your local assay conditions and test parameters for reference.

PRODUCT OVERVIEW

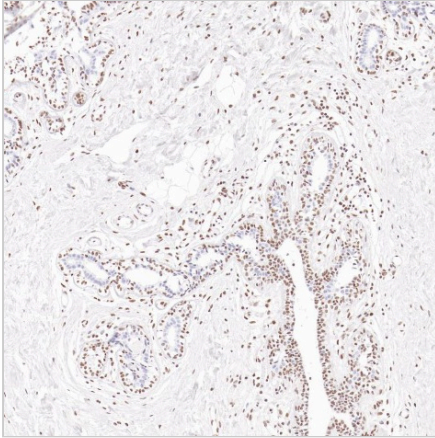
Predicted Molecular Wt	59kDa
Purity	ProA affinity purified IgG
Subcellular location	Nucleus/Cytoplasmic
Swissprot ID	Q92731
Immunogen	Synthetic peptide.
Storage Buffer	PBS 59%, Sodium azide 0.01%, Glycerol 40%, BSA 0.05%
Recommended Method	Heat induced epitope retrieval with Tris-EDTA buffer (pH 9.0), primary antibody incubate at RT (18°C-25°C) for 30 minutes

*AREX continuously optimizes our products. Webpage content may not reflect the latest updates. For inquiries, please contact info@arexbio.com or your local distributor.

*Clone Number, Reactivity, Source/Host and Clonality can be found in the product name and Key Features section above.

DATASHEET**Estrogen receptor beta Rabbit Monoclonal Antibody(ARB950)**

CAT. NO. ARB6742

DATA

Immunohistochemical staining of human breast tissue using Estrogen receptor beta Rabbit Monoclonal Antibody(ARB950)

STORAGE

Store at 4°C short term. For long term storage, store at -20°C, avoiding freeze/thaw cycles.

NOTE

For Research Use Only. Not for diagnostic, therapeutics, prophylactic or in vivo use.

More information: www.arexbio.com