

DATASHEET

Ep-CAM Rabbit Monoclonal Antibody(ARB948)

CAT. NO. ARB6740

KEY FEATURES

Target	Ep-CAM	Clonality	Monoclonal
Clone ID	ARB948	Applications	IHC
Source / Host	Rabbit	Dilution	1:100-1:200
Reactivity	Human	Storage	at-20°C

BACKGROUND

Epithelial cell adhesion molecule (EpCAM) is a transmembrane glycoprotein, may act as a physical homophilic interaction molecule between intestinal epithelial cells (IECs) and intraepithelial lymphocytes (IELs) at the mucosal epithelium for providing immunological barrier as a first line of defense against mucosal infection. It plays a role in embryonic stem cells proliferation and differentiation, and it up-regulates the expression of FABP5, MYC and cyclins A and E. This glycoprotein is located on the cell membrane surface (preferentially basolaterally) and in the cytoplasm of virtually all epithelial cells with the exception of most squamous epithelia, hepatocytes, renal proximal tubular cells, gastric parietal cells and myoepithelial cells. However, focal positivity may be seen in the basal layer of squamous cell epithelium of endoderm (e.g., palatine tonsils) and mesoderm (e.g., uterine cervix).

APPLICATION

To ensure optimal assay performance, AREX recommends conducting reagent titration tailored to each testing system for optimal detection results.

IHC	1:100 - 1:200
-----	---------------

*Results are sample-specific. Please refer to your local assay conditions and test parameters for reference.

PRODUCT OVERVIEW

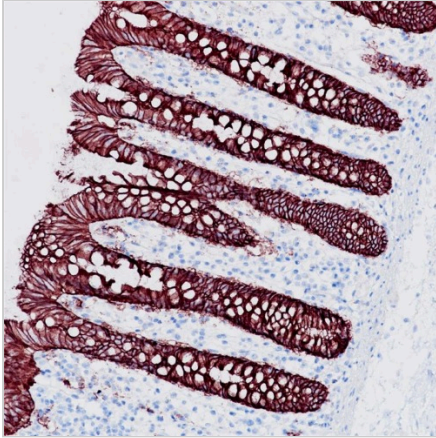
Predicted Molecular Wt	35kDa
Purity	ProA affinity purified IgG
Subcellular location	Membrane
Swissprot ID	P16422
Immunogen	Synthetic peptide corresponding to EpCAM residues within aa1-100 of EpCAM was used as an immunogen
Storage Buffer	PBS 59%, Sodium azide 0.01%, Glycerol 40%, BSA 0.05%
Recommended method	Heat induced epitope retrieval with Tris-EDTA buffer (pH 9.0), primary antibody incubate at RT (18°C-25°C) for 30 minutes

*AREX continuously optimizes our products. Webpage content may not reflect the latest updates. For inquiries, please contact info@arexbio.com or your local distributor.

*Clone Number, Reactivity, Source/Host and Clonality can be found in the product name and Key Features section above.

DATASHEET**Ep-CAM Rabbit Monoclonal Antibody(ARB948)**

CAT. NO. ARB6740

DATA

Immunohistochemical staining of human appendix tissue using Ep-CAM Rabbit Monoclonal Antibody(ARB948)

STORAGE

Store at 4°C short term. For long term storage, store at -20°C, avoiding freeze/thaw cycles.

NOTE

For Research Use Only. Not for diagnostic, therapeutics, prophylactic or in vivo use.

More information: www.arexbio.com