

**DATASHEET**

**EGFR(L858R) Rabbit Monoclonal Antibody(ARB947)**

CAT. NO. ARB6739

**KEY FEATURES**

Target	EGFR(L858R)	Clonality	Monoclonal
Clone ID	ARB947	Applications	IHC
Source / Host	Rabbit	Dilution	1:100-1:200
Reactivity	Human	Storage	at-20°C

**BACKGROUND**

Receptor tyrosine kinase binding ligands of the EGF family and activating several signaling cascades to convert extracellular cues into appropriate cellular responses. Known ligands include EGF, TGFA/TGF-alpha, amphiregulin, epigen/EPGN, BTC/betacellulin, epiregulin/EREG and HBEGF/heparin-binding EGF. Ligand binding triggers receptor homo- and/or heterodimerization, and autophosphorylation on key cytoplasmic residues. The phosphorylated receptor recruits adapter proteins like GRB2 which in turn activates complex downstream signaling cascades. Activates at least 4 major downstream signaling cascades including the RAS-RAF-MEK-ERK, PI3 kinase-AKT, PLCgamma-PKC and STATs modules. May also activate the NF-kappa-B signaling cascade. Also directly phosphorylates other proteins like RPS6KA2, activating its GTPase activity and probably coupling the EGF receptor signaling to the G protein-coupled receptor signaling. Also phosphorylates MUC1 and increases its interaction with SRC and CTNNB1/beta-catenin. Plays a role in enhancing learning and memory performance (By similarity).The antibody is specific expressed on EGFR(L858R) mutated lung cancer.

**APPLICATION**

To ensure optimal assay performance, AREX recommends conducting reagent titration tailored to each testing system for optimal detection results.

IHC	1:100 - 1:200
-----	---------------

\*Results are sample-specific. Please refer to your local assay conditions and test parameters for reference.

**PRODUCT OVERVIEW**

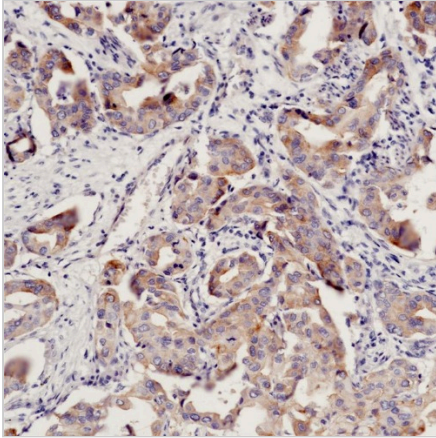
Predicted Molecular Wt	134kDa
Purity	ProA affinity purified IgG
Subcellular location	Cytoplasm
Swissprot ID	P00533
Immunogen	A synthetic peptide corresponding to EGFR residues within aa800-900 of EGF receptor (mutated L858R) was used as an immunogen
Storage Buffer	PBS 59%, Sodium azide 0.01%, Glycerol 40%, BSA 0.05%
Recommended method	Heat induced epitope retrieval with Tris-EDTA buffer (pH 9.0), primary antibody incubate at 4°C overnight

\*AREX continuously optimizes our products. Webpage content may not reflect the latest updates. For inquiries, please contact [info@arexbio.com](mailto:info@arexbio.com) or your local distributor.

\*Clone Number, Reactivity, Source/Host and Clonality can be found in the product name and Key Features section above.

**DATASHEET****EGFR(L858R) Rabbit Monoclonal Antibody(ARB947)**

CAT. NO. ARB6739

**DATA**

Immunohistochemical staining of human lung carcinoma tissue using EGFR (L858R) Rabbit Monoclonal Antibody(ARB947)

**STORAGE**

Store at 4°C short term. For long term storage, store at -20°C, avoiding freeze/thaw cycles.

**NOTE**

For Research Use Only. Not for diagnostic, therapeutics, prophylactic or in vivo use.

More information: [www.arexbio.com](http://www.arexbio.com)