

DATASHEET

EGFR Rabbit Monoclonal Antibody(ARB946)

CAT. NO. ARB6738

KEY FEATURES

Target	EGFR	Clonality	Monoclonal
Clone ID	ARB946	Applications	IHC
Source / Host	Rabbit	Dilution	1:100-1:200
Reactivity	Human	Storage	at-20°C

BACKGROUND

EGFR is type I receptor tyrosine kinase with sequence homology to erbB - 1, - 2, - 3, - 4. It binds to Epidermal Growth Factor (EGF), Transforming Growth Factor - α (TGF - α), Heparin - binding EGF (HB - EGF), amphiregulin, betacellulin and epiregulin. EGFR is overexpressed in tumors of breast, brain, bladder, lung, gastric, head, neck, esophagus, cervix, vulva, ovary, and endometrium. It is predominantly present in squamous cell carcinomas.

APPLICATION

To ensure optimal assay performance, AREX recommends conducting reagent titration tailored to each testing system for optimal detection results.

IHC	1:100 - 1:200
-----	---------------

*Results are sample-specific. Please refer to your local assay conditions and test parameters for reference.

PRODUCT OVERVIEW

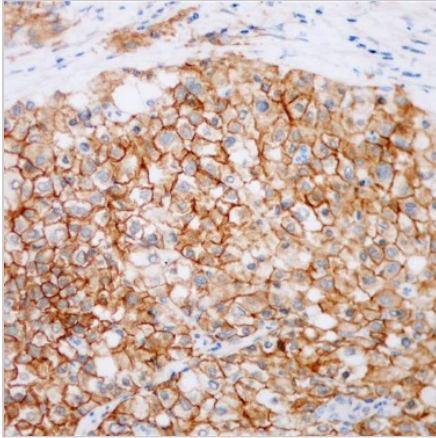
Predicted Molecular Wt	134 kDa
Purity	ProA affinity purified IgG
Subcellular location	Cytomembrane
Swissprot ID	P00533
Immunogen	Synthetic peptide corresponding to residues within aa1050-1150 of EGFR
Storage Buffer	PBS 59%, Sodium azide 0.01%, Glycerol 40%, BSA 0.05%.
Recommended method	Heat induced epitope retrieval with Tris-EDTA buffer (pH 9.0), primary antibody incubate at RT (18° C-25° C) for 30 minutes.

*AREX continuously optimizes our products. Webpage content may not reflect the latest updates. For inquiries, please contact info@arexbio.com or your local distributor.

*Clone Number, Reactivity, Source/Host and Clonality can be found in the product name and Key Features section above.

DATASHEET**EGFR Rabbit Monoclonal Antibody(ARB946)**

CAT. NO. ARB6738

DATA

Immunohistochemical staining of human hepatic tissue sections using EGFR Rabbit Monoclonal Antibody (ARB946). Immunohistochemical staining of human pulmonary carcinoma tissue sections using EGFR Rabbit Monoclonal Antibody (ARB946).

STORAGE

Store at 4°C short term. For long term storage, store at -20°C, avoiding freeze/thaw cycles.

NOTE

For Research Use Only. Not for diagnostic, therapeutics, prophylactic or in vivo use.

More information: www.arexbio.com