

**DATASHEET**

**Cytokeratin 5 Rabbit Monoclonal Antibody(ARB939)**

CAT. NO. ARB6731

**KEY FEATURES**

Target	Cytokeratin 5	Clonality	Monoclonal
Clone ID	ARB939	Applications	IHC
Source / Host	Rabbit	Dilution	1:100-1:200
Reactivity	Human	Storage	at-20°C

**BACKGROUND**

Cytokeratin 20 is the simple-epithelial keratin with the most restricted expression pattern. For pair formation, its type II partner usually appears to be cytokeratin 8. The remarkable expression spectrum of cytokeratin 20 among normal tissues comprises gastric foveolar epithelium and small and large intestinal epithelium and, in addition, the urothelium and certain neuroendocrine cells, in particular Merkel cells of the skin. In tumor tissues, cytokeratin 20 is expressed in adenocarcinomas of the colon, stomach, pancreas, bile system and mucinous ovarian tumors, transitional cell carcinomas of the urinary tract, and Merkel cell carcinomas. Cytokeratin 20 is often used in conjunction with CK7 and other antibodies in distinguishing colon carcinomas (CK20+) from ovarian, pulmonary, and breast carcinomas.

**APPLICATION**

To ensure optimal assay performance, AREX recommends conducting reagent titration tailored to each testing system for optimal detection results.

IHC	1:100 - 1:200
-----	---------------

\*Results are sample-specific. Please refer to your local assay conditions and test parameters for reference.

**PRODUCT OVERVIEW**

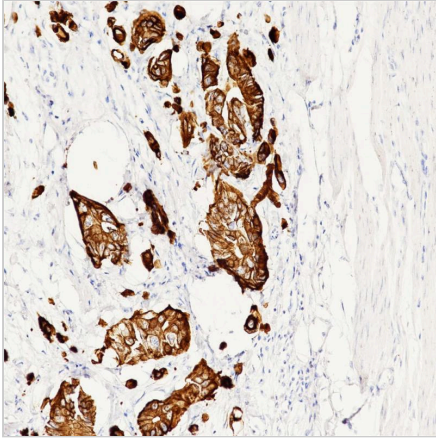
Predicted Molecular Wt	48kDa
Purity	ProA affinity purified IgG
Subcellular location	Cytoplasm
Swissprot ID	P35900
Immunogen	Synthetic peptide according to the aa490-590 (C-terminal) of cytokeratin 5 was used as an immunogen.
Storage Buffer	PBS 59%, Sodium azide 0.01%, Glycerol 40%, BSA 0.05%.
Recommended method	Heat induced epitope retrieval with Tris-EDTA buffer (pH 9.0), primary antibody incubate at RT (18°C-25°C) for 31 minutes.

\*AREX continuously optimizes our products. Webpage content may not reflect the latest updates. For inquiries, please contact [info@arexbio.com](mailto:info@arexbio.com) or your local distributor.

\*Clone Number, Reactivity, Source/Host and Clonality can be found in the product name and Key Features section above.

**DATASHEET****Cytokeratin 5 Rabbit Monoclonal Antibody(ARB939)**

CAT. NO. ARB6731

**DATA**

Immunohistochemical staining of human colorectal adenocarcinoma tissue sections using Cytokeratin 5 Rabbit Monoclonal Antibody (ARB939).

**STORAGE**

Store at 4°C short term. For long term storage, store at -20°C, avoiding freeze/thaw cycles.

**NOTE**

For Research Use Only. Not for diagnostic, therapeutics, prophylactic or in vivo use.

More information: [www.arexbio.com](http://www.arexbio.com)