

DATASHEET

Cytokeratin 20 Rabbit Monoclonal Antibody(ARB938)

CAT. NO. ARB6730

KEY FEATURES

Target	Cytokeratin 20	Clonality	Monoclonal
Clone ID	ARB938	Applications	IHC
Source / Host	Rabbit	Dilution	1:100-1:200
Reactivity	Human	Storage	at-20°C

BACKGROUND

Cytokeratin 20 is the simple-epithelial keratin with the most restricted expression pattern. For pair formation, its type II partner usually appears to be cytokeratin 8. The remarkable expression spectrum of cytokeratin 20 among normal tissues comprises gastric foveolar epithelium and small and large intestinal epithelium and, in addition, the urothelium and certain neuroendocrine cells, in particular Merkel cells of the skin. In tumor tissues, cytokeratin 20 is expressed in adenocarcinomas of the colon, stomach, pancreas, bile system and mucinous ovarian tumors, transitional cell carcinomas of the urinary tract, and Merkel cell carcinomas. Cytokeratin 20 is often used in conjunction with CK7 and other antibodies in distinguishing colon carcinomas (CK20+) from ovarian, pulmonary, and breast carcinomas.

APPLICATION

To ensure optimal assay performance, AREX recommends conducting reagent titration tailored to each testing system for optimal detection results.

IHC	1:100 - 1:200
-----	---------------

*Results are sample-specific. Please refer to your local assay conditions and test parameters for reference.

PRODUCT OVERVIEW

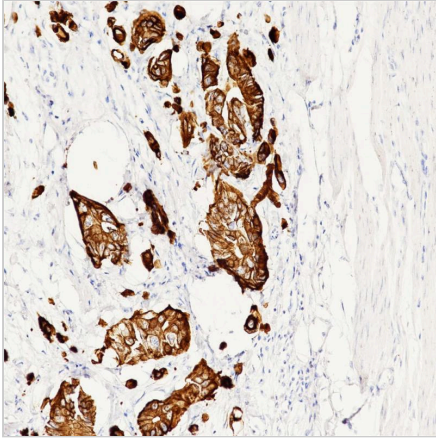
Predicted Molecular Wt	48kDa
Purity	ProA affinity purified IgG
Subcellular location	Cytoplasm
Swissprot ID	P35900
Immunogen	Synthetic peptide corresponding to cytokeratin 20 residues within aa324 - 424 of cytokeratin 20 was used as an immunogen
Storage Buffer	PBS 59%, Sodium azide 0.01%, Glycerol 40%, BSA 0.05%.
Recommended method	Heat induced epitope retrieval with Tris - EDTA buffer (pH 9.0), primary antibody incubate at RT (18°C - 25°C) for 30 minutes

*AREX continuously optimizes our products. Webpage content may not reflect the latest updates. For inquiries, please contact info@arexbio.com or your local distributor.

*Clone Number, Reactivity, Source/Host and Clonality can be found in the product name and Key Features section above.

DATASHEET**Cytokeratin 20 Rabbit Monoclonal Antibody(ARB938)**

CAT. NO. ARB6730

DATA

Immunohistochemical staining of human colon adenocarcinoma tissue using Cytokeratin 20 Rabbit Monoclonal Antibody (ARB938).

STORAGE

Store at 4°C short term. For long term storage, store at -20°C, avoiding freeze/thaw cycles.

NOTE

For Research Use Only. Not for diagnostic, therapeutics, prophylactic or in vivo use.

More information: www.arexbio.com