

**DATASHEET**

**Cytokeratin 10 Rabbit Monoclonal Antibody(ARB934)**

CAT. NO. ARB6726

**KEY FEATURES**

Target	Cytokeratin 10	Clonality	Monoclonal
Clone ID	ARB934	Applications	IHC
Source / Host	Rabbit	Dilution	1:100-1:200
Reactivity	Human	Storage	at-20°C

**BACKGROUND**

Cytokeratin 10 is a member of the type I (acidic) cytokeratin family, which belongs to the superfamily of intermediate filament (IF) proteins. Cytokeratin 10 can specifically inhibits proliferation and cell cycle progression of keratinocytes. Cytokeratin 10 is usually expressed in suprabasal keratinocytes and can also be seen in suprabasal cells of internal noncornifying, stratified squamous epithelia. In addition, cytokeratin 10 is reported to be atypical component of cells of eccrine sweat gland ducts and sebaceous cells. Cytokeratin 10 was found to be sparse in poorly differentiated squamous cell carcinoma, eventhough it has been reported that focal cytokeratin 10 expression has been found in 50% of cases of oral and pharyngeal squamous cell carcinoma. Cytokeratin 10 has demonstrated utility in the differentiation of extra-mammary Paget 鈱癸 disease (negative) from basal cell carcinoma and squamous cell carcinoma (positive).

**APPLICATION**

To ensure optimal assay performance, AREX recommends conducting reagent titration tailored to each testing system for optimal detection results.

IHC	1:100 - 1:200
-----	---------------

\*Results are sample-specific. Please refer to your local assay conditions and test parameters for reference.

**PRODUCT OVERVIEW**

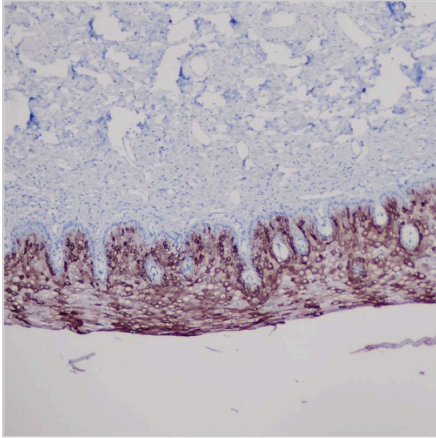
Predicted Molecular Wt	59kDa
Purity	ProA affinity purified IgG
Subcellular location	Cytoplasm
Swissprot ID	P13645
Immunogen	Synthetic peptide corresponding to Cytokeratin 10 residues within aa484-584 of Cytokeratin 10
Storage Buffer	PBS 59%, Sodium azide 0.01%, Glycerol 40%, BSA 0.05%.
Recommended method	Heat induced epitope retrieval with Tris-EDTA buffer (pH 9.0), primary antibody incubate at RT (18°C-25°C) for 30 minutes.

\*AREX continuously optimizes our products. Webpage content may not reflect the latest updates. For inquiries, please contact [info@arexbio.com](mailto:info@arexbio.com) or your local distributor.

\*Clone Number, Reactivity, Source/Host and Clonality can be found in the product name and Key Features section above.

**DATASHEET****Cytokeratin 10 Rabbit Monoclonal Antibody(ARB934)**

CAT. NO. ARB6726

**DATA**

Immunohistochemical staining of human cervix tissue using Cytokeratin 10 Rabbit Monoclonal Antibody (ARB934).

**STORAGE**

Store at 4°C short term. For long term storage, store at -20°C, avoiding freeze/thaw cycles.

**NOTE**

For Research Use Only. Not for diagnostic, therapeutics, prophylactic or in vivo use.

More information: [www.arexbio.com](http://www.arexbio.com)