

**DATASHEET**

**Cytokeratin 1 Rabbit Monoclonal Antibody(ARB933)**

CAT. NO. ARB6725

**KEY FEATURES**

Target	Cytokeratin 1	Clonality	Monoclonal
Clone ID	ARB933	Applications	IHC
Source / Host	Rabbit	Dilution	1:100-1:200
Reactivity	Human	Storage	at-20°C

**BACKGROUND**

In normal tissues, cytokeratin (high molecular weight) is mainly expressed in normal squamous epithelium, ductal epithelium and other laminated epithelium. Positive expression was found in lung squamous cell carcinoma, breast cancer, pancreatic cancer, cholangiocarcinoma and bladder transitional cell carcinoma. Anti-cytokeratin, high molecular weight is capable of recognizing all basic keratins; therefore, it is a broadly reactive antibody staining most epithelia and their neoplasms. Members of the acidic and basic subfamilies are found together in pairs. Since each epithelium contains at least one acidic and one basic keratin, this antibody is used to observe the distribution of keratin-containing cells in normal epithelia and to identify neoplasms derived from such epithelium.

**APPLICATION**

To ensure optimal assay performance, AREX recommends conducting reagent titration tailored to each testing system for optimal detection results.

IHC	1:100 - 1:200
-----	---------------

\*Results are sample-specific. Please refer to your local assay conditions and test parameters for reference.

**PRODUCT OVERVIEW**

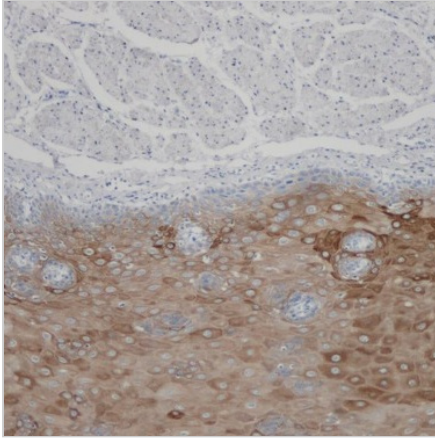
Predicted Molecular Wt	66kDa
Purity	ProA affinity purified IgG
Subcellular location	Cytoplasm
Swissprot ID	P04264
Immunogen	Synthetic peptide corresponding to residues within aa200-300 of Cytokeratin 1 and aa490-590 (C-terminal) of Cytokeratin 5
Storage Buffer	PBS 59%, Sodium azide 0.01%, Glycerol 40%, BSA 0.05%.
Recommended method	Heat induced epitope retrieval with Tris-EDTA buffer (pH 9.0), primary antibody incubate at RT (18°C-25°C) for 30 minutes.

\*AREX continuously optimizes our products. Webpage content may not reflect the latest updates. For inquiries, please contact [info@arexbio.com](mailto:info@arexbio.com) or your local distributor.

\*Clone Number, Reactivity, Source/Host and Clonality can be found in the product name and Key Features section above.

**DATASHEET****Cytokeratin 1 Rabbit Monoclonal Antibody(ARB933)**

CAT. NO. ARB6725

**DATA**

Immunohistochemical staining of human esophagus tissue using Cytokeratin 1 Rabbit Monoclonal Antibody (ARB933).

**STORAGE**

Store at 4°C short term. For long term storage, store at -20°C, avoiding freeze/thaw cycles.

**NOTE**

For Research Use Only. Not for diagnostic, therapeutics, prophylactic or in vivo use.

More information: [www.arexbio.com](http://www.arexbio.com)