

**DATASHEET**

**Cyclin D1 Rabbit Monoclonal Antibody(ARB932)**

CAT. NO. ARB6724

**KEY FEATURES**

Target	Cyclin D1	Clonality	Monoclonal
Clone ID	ARB932	Applications	IHC
Source / Host	Rabbit	Dilution	1:100-1:200
Reactivity	Human	Storage	at-20°C

**BACKGROUND**

Cyclin D1 (synonymes: PRAD1, parathyroid adenomatosis 1, CCND1) is a 295 amino acid protein, 36 kDa, which belongs to the highly conserved cyclin family, whose members are characterized by a dramatic periodicity in protein abundance throughout the cell cycle. Cyclin D1 forms a complex with and functions as a regulatory subunit of CDK4 or CDK6, whose activity is required for cell cycle G1/S transition. The protein has been shown to interact with tumour suppressor protein Rb and its expression is regulated positively by Rb. The expression is cell cycle dependant, maximal in G1 and minimal in S phase. Localization is mainly nuclear. In normal tissues, Cyclin D1 expression is restricted to the proliferative zone of epithelial tissues, endothelium and some fibroblasts. There is no expression in lymphoid tissue. Mutations with amplification of the cyclin D1 gene, with overexpression of the protein, which alters cell cycle progression, are observed frequently in a variety of tumours and may contribute to tumourigenesis. In diagnostic pathology, immunohistochemical detection of Cyclin D1 is used mainly for the diagnosis of mantle cell lymphoma. While other methods of cyclin D1 detection are being explored, immunohistochemistry is still widely used and anti-cyclin D1 antibodies remain an essential component in a small B-cell lymphoproliferative disorder panel.

**APPLICATION**

To ensure optimal assay performance, AREX recommends conducting reagent titration tailored to each testing system for optimal detection results.

IHC	1:100 - 1:200
-----	---------------

\*Results are sample-specific. Please refer to your local assay conditions and test parameters for reference.

**PRODUCT OVERVIEW**

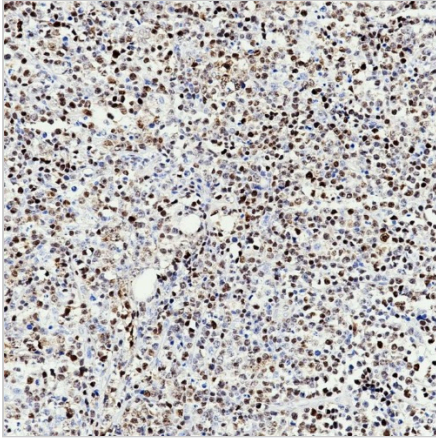
Predicted Molecular Wt	34kDa
Purity	ProA affinity purified IgG
Subcellular location	Nucleus
Swissprot ID	P24385
Immunogen	Synthetic peptide corresponding to residues within aa200-295 of Cyclin D1
Storage Buffer	PBS 59%, Sodium azide 0.01%, Glycerol 40%, BSA 0.05%.
Recommended method	Heat induced epitope retrieval with Tris-EDTA buffer (pH 9.0), primary antibody incubate at RT (18°C-25°C) for 30 minutes.

\*AREX continuously optimizes our products. Webpage content may not reflect the latest updates. For inquiries, please contact [info@arexbio.com](mailto:info@arexbio.com) or your local distributor.

\*Clone Number, Reactivity, Source/Host and Clonality can be found in the product name and Key Features section above.

**DATASHEET****Cyclin D1 Rabbit Monoclonal Antibody(ARB932)**

CAT. NO. ARB6724

**DATA**

Immunohistochemical staining of human mantle cell lymphoma tissue using Cyclin D1 Rabbit Monoclonal Antibody (ARB932).

**STORAGE**

Store at 4°C short term. For long term storage, store at -20°C, avoiding freeze/thaw cycles.

**NOTE**

For Research Use Only. Not for diagnostic, therapeutics, prophylactic or in vivo use.

More information: [www.arexbio.com](http://www.arexbio.com)