

## DATASHEET

# c-Myc Rabbit Monoclonal Antibody(ARB926)

CAT. NO. ARB6718

### KEY FEATURES

|               |        |              |             |
|---------------|--------|--------------|-------------|
| Target        | c-Myc  | Clonality    | Monoclonal  |
| Clone ID      | ARB926 | Applications | IHC         |
| Source / Host | Rabbit | Dilution     | 1:100-1:200 |
| Reactivity    | Human  | Storage      | at-20°C     |

### BACKGROUND

The function of oncogene-encoded c-Myc, n-Myc, and I-Myc is relevant to cell proliferation, differentiation and neoplastic disease. A mutated version of Myc is found in many cancers, which causes Myc to be constitutively expressed. This leads to the unregulated expression of many genes, some of which are involved in cell proliferation, and result in the formation of cancer. c-Myc is a transcription factor and is a proto-oncogene that is the focal point in cell cycle regulation, metabolism, apoptosis, differentiation, cell adhesion, and tumorigenesis. A common human translocation involving Myc is t(8;14), which is critical to the development of most cases of Burkitt's Lymphoma. Malfunctions in Myc have also been found in carcinoma of the cervix, colon, breast, lung, and stomach.

### APPLICATION

To ensure optimal assay performance, AREX recommends conducting reagent titration tailored to each testing system for optimal detection results.

|     |               |
|-----|---------------|
| IHC | 1:100 - 1:200 |
|-----|---------------|

\*Results are sample-specific. Please refer to your local assay conditions and test parameters for reference.

### PRODUCT OVERVIEW

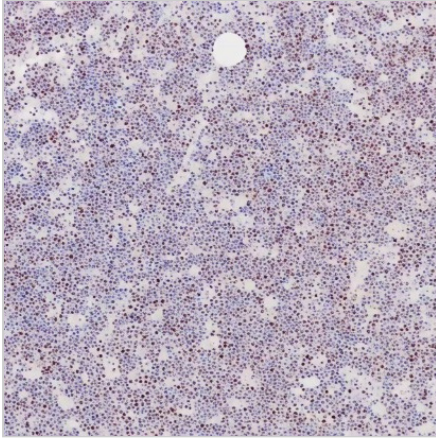
|                        |  |
|------------------------|--|
| Predicted Molecular Wt | 48kDa  |
| Purity                 | ProA affinity purified IgG   |
| Subcellular location   | Nucleus  |
| Swissprot ID           | P01106   |
| Immunogen              | Synthetic peptide.   |
| Storage Buffer         | PBS 59%, Sodium azide 0.01%, Glycerol 40%, BSA 0.05%.  |
| Recommended Method     | Heat induced epitope retrieval with Tris-EDTA buffer (pH 9.0), primary antibody incubate at RT (18°C-25°C) for 30 minutes. |

\*AREX continuously optimizes our products. Webpage content may not reflect the latest updates. For inquiries, please contact [info@arexbio.com](mailto:info@arexbio.com) or your local distributor.

\*Clone Number, Reactivity, Source/Host and Clonality can be found in the product name and Key Features section above.

**DATASHEET****c-Myc Rabbit Monoclonal Antibody(ARB926)**

CAT. NO. ARB6718

**DATA**

Immunohistochemical staining of human Burkitt lymphoma tissue using c-Myc Rabbit Monoclonal Antibody (ARB926).

**STORAGE**

Store at 4°C short term. For long term storage, store at -20°C, avoiding freeze/thaw cycles.

**NOTE**

For Research Use Only. Not for diagnostic, therapeutics, prophylactic or in vivo use.

More information: [www.arexbio.com](http://www.arexbio.com)