

DATASHEET

Clusterin Rabbit Monoclonal Antibody(ARB924)

CAT. NO. ARB6716

KEY FEATURES

Target	Clusterin	Clonality	Monoclonal
Clone ID	ARB924	Applications	IHC
Source / Host	Rabbit	Dilution	1:100-1:200
Reactivity	Human	Storage	at-20°C

BACKGROUND

Clusterin functions as extracellular chaperone that prevents aggregation of nonnative proteins. It also functions as intracellular chaperone that prevents aggregation of nonnative proteins. Its intracellular form suppresses stress-induced apoptosis by stabilizing mitochondrial membrane integrity through interaction with HSPA5. Clusterin is detected in blood plasma, cerebrospinal fluid, milk, seminal plasma and colon mucosa. It's also detected in brain, testis, ovary, liver and pancreas, and at lower levels in kidney, heart, spleen and lung. Clusterin has been shown to stain 95% of systemic ALCL, including 100% of ALK-1(+) and 91% of ALK-1(-) ALCL. Studies have shown that clusterin may be a useful diagnostic marker for ALCL, especially in ALK-1(-) cases. Overexpression of clusterin appears to be a useful prognostic factor for patients with ovarian carcinomas.

APPLICATION

To ensure optimal assay performance, AREX recommends conducting reagent titration tailored to each testing system for optimal detection results.

IHC	1:100 - 1:200
-----	---------------

*Results are sample-specific. Please refer to your local assay conditions and test parameters for reference.

PRODUCT OVERVIEW

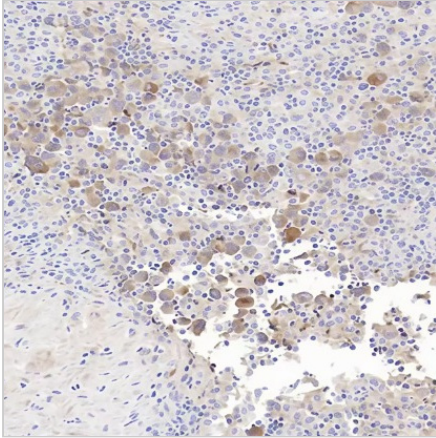
Predicted Molecular Wt	52kDa
Purity	ProA affinity purified IgG
Subcellular location	Secreted
Swissprot ID	P10909
Immunogen	Recombinant protein fragment of Clusterin was used as an immunogen.
Storage Buffer	PBS 59%, Sodium azide 0.01%, Glycerol 40%, BSA 0.05%.
Recommended Method	Heat induced epitope retrieval with Tris-EDTA buffer (pH 9.0), primary antibody incubate at RT (18°C-25°C) for 30 minutes.

*AREX continuously optimizes our products. Webpage content may not reflect the latest updates. For inquiries, please contact info@arexbio.com or your local distributor.

*Clone Number, Reactivity, Source/Host and Clonality can be found in the product name and Key Features section above.

DATASHEET**Clusterin Rabbit Monoclonal Antibody(ARB924)**

CAT. NO. ARB6716

DATA

Immunohistochemical staining of human tonsil tissue using Clusterin Rabbit Monoclonal Antibody (ARB924).

STORAGE

Store at 4°C short term. For long term storage, store at -20°C, avoiding freeze/thaw cycles.

NOTE

For Research Use Only. Not for diagnostic, therapeutics, prophylactic or in vivo use.

More information: www.arexbio.com