

**DATASHEET**

**CLPS Rabbit Monoclonal Antibody(ARB923)**

**CAT. NO. ARB6715**

**KEY FEATURES**

Target	CLPS	Clonality	Monoclonal
Clone ID	ARB923	Applications	IHC
Source / Host	Rabbit	Dilution	1:100-1:200
Reactivity	Human	Storage	at-20°C

**BACKGROUND**

CLPS (colipase) belongs to the colipase family. Structural studies of the complex and of colipase alone have revealed the functionality of its architecture. It is a small protein with five conserved disulphide bonds. Structural analogies have been recognised between a developmental protein, the pancreatic lipase C-terminal domain, the N-terminal domains of lipoxigenases and the C-terminal domain of alpha-toxin. Colipase can only be detected in pancreatic acinar cells, suggesting regulation of expression by tissue-specific elements. Colipase functions as a cofactor for pancreatic triglyceride lipase for the efficient hydrolysis of dietary lipid. Its expression is increased by secretin and dietary fats. Arg92Cys polymorphism in this gene is linked with increased susceptibility to type II diabetes. This polymorphism reduces functionality against long-chain triglycerides, which might be a possible cause of type II diabetes.

**APPLICATION**

To ensure optimal assay performance, AREX recommends conducting reagent titration tailored to each testing system for optimal detection results.

IHC	1:100 - 1:200
-----	---------------

\*Results are sample-specific. Please refer to your local assay conditions and test parameters for reference.

**PRODUCT OVERVIEW**

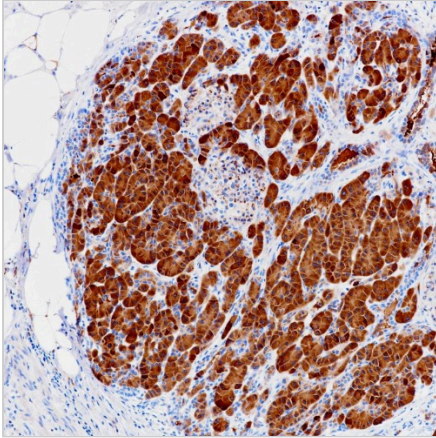
Predicted Molecular Wt	12kDa
Purity	ProA affinity purified IgG
Subcellular location	Cytoplasm (Secreted)
Swissprot ID	P04118
Immunogen	Recombinant Human CLPS / Colipase protein.
Storage Buffer	PBS 59%, Sodium azide 0.01%, Glycerol 40%, BSA 0.05%.
Recommended Method	Heat induced epitope retrieval with Tris-EDTA buffer (pH 9.0), primary antibody incubate at RT (18°C-25°C) for 30 minutes.

\*AREX continuously optimizes our products. Webpage content may not reflect the latest updates. For inquiries, please contact [info@arexbio.com](mailto:info@arexbio.com) or your local distributor.

\*Clone Number, Reactivity, Source/Host and Clonality can be found in the product name and Key Features section above.

**DATASHEET****CLPS Rabbit Monoclonal Antibody(ARB923)**

CAT. NO. ARB6715

**DATA**

Immunohistochemical staining of human pancreas tissue sections using CLPS Rabbit Monoclonal Antibody (ARB923).

**STORAGE**

Store at 4°C short term. For long term storage, store at -20°C, avoiding freeze/thaw cycles.

**NOTE**

For Research Use Only. Not for diagnostic, therapeutics, prophylactic or in vivo use.

More information: [www.arexbio.com](http://www.arexbio.com)