

DATASHEET

Claudin18.2 Rabbit Monoclonal Antibody(ARB922)

CAT. NO. ARB6714

KEY FEATURES

Target	Claudin18.2	Clonality	Monoclonal
Clone ID	ARB922	Applications	IHC
Source / Host	Rabbit	Dilution	1:100-1:200
Reactivity	Human	Storage	at-20°C

BACKGROUND

Claudin18.2 (CLDN18.2) is a splice variant of the membrane epithelial tight junctions protein Claudin18 (CLDN18) and has been identified as a promising biomarker for targeted therapy. While upon malignant transformation, the changes in cell polarity lead to the exposure of CLDN18.2 epitopes, which are suitable for targeted therapy. Prior evidence demonstrates that except for GC, CLDN18.2 is aberrantly expressed in various primary tumors and metastases, including pancreatic, biliary, ovarian, and lung adenocarcinomas, which makes CLDN18.2 a pan-cancer target. CLDN18.2 has a restricted expression profile in normal tissues, it physiologically expresses only in the tight junction supramolecular complex of gastric mucosa.

APPLICATION

To ensure optimal assay performance, AREX recommends conducting reagent titration tailored to each testing system for optimal detection results.

IHC	1:100 - 1:200
-----	---------------

*Results are sample-specific. Please refer to your local assay conditions and test parameters for reference.

PRODUCT OVERVIEW

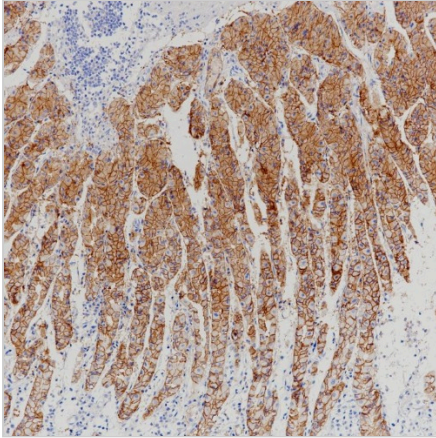
Predicted Molecular Wt	28kDa
Purity	ProA affinity purified IgG
Subcellular location	Membrane
Swissprot ID	P56856-2
Immunogen	Recombinant protein fragment of human Claudin18.2
Storage Buffer	PBS 59%, Sodium azide 0.01%, Glycerol 40%, BSA 0.05%.
Recommended Method	Heat induced epitope retrieval with Tris-EDTA buffer (pH 9.0), primary antibody incubate at RT (18°C-25°C) for 30 minutes.

*AREX continuously optimizes our products. Webpage content may not reflect the latest updates. For inquiries, please contact info@arexbio.com or your local distributor.

*Clone Number, Reactivity, Source/Host and Clonality can be found in the product name and Key Features section above.

DATASHEET**Claudin18.2 Rabbit Monoclonal Antibody(ARB922)**

CAT. NO. ARB6714

DATA

Immunohistochemical staining of human stomach tissue sections using Claudin18.2 Rabbit Monoclonal Antibody (ARB922).

STORAGE

Store at 4°C short term. For long term storage, store at -20°C, avoiding freeze/thaw cycles.

NOTE

For Research Use Only. Not for diagnostic, therapeutics, prophylactic or in vivo use.

More information: www.arexbio.com