

## DATASHEET

# Chromogranin A Rabbit Monoclonal Antibody(ARB920)

CAT. NO. ARB6712

### KEY FEATURES

Target	Chromogranin A	Clonality	Monoclonal
Clone ID	ARB920	Applications	IHC
Source / Host	Rabbit	Dilution	1:100-1:200
Reactivity	Human	Storage	at-20°C

### BACKGROUND

Chromogranin A (CGA) is an acidic protein which is reported to be widely expressed in neural tissues and in secretory granules of human endocrine cells eg parathyroid gland, adrenal medulla, anterior pituitary gland, islet cells of the pancreas and C cells of the thyroid. CGA is found in the large majority of epithelial NE tumours: pituitary adenomas, parathyroid and pancreatic islet cell tumours, medullary thyroid carcinoma, and carcinoid tumours. Together with synaptophysin, CGA is the most important marker for the identification of NE and neuronal tumours and NE/neuronal differentiation in other tumours.

### APPLICATION

To ensure optimal assay performance, AREX recommends conducting reagent titration tailored to each testing system for optimal detection results.

IHC	1:100 - 1:200
-----	---------------

\*Results are sample-specific. Please refer to your local assay conditions and test parameters for reference.

### PRODUCT OVERVIEW

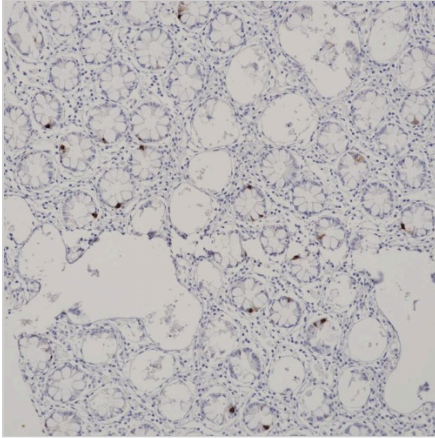
Predicted Molecular Wt	51kDa
Purity	ProA affinity purified IgG
Subcellular location	Cytoplasm
Swissprot ID	P10645
Immunogen	Synthetic peptide corresponding to residues within aa400 to aa600 of Chromogranin A
Storage Buffer	PBS 59%, Sodium azide 0.01%, Glycerol 40%, BSA 0.05%.
Recommended method	Heat induced epitope retrieval with Tris-EDTA buffer (pH 9.0), primary antibody incubate at RT (18°C-25°C) for 30 minutes.

\*AREX continuously optimizes our products. Webpage content may not reflect the latest updates. For inquiries, please contact [info@arexbio.com](mailto:info@arexbio.com) or your local distributor.

\*Clone Number, Reactivity, Source/Host and Clonality can be found in the product name and Key Features section above.

**DATASHEET****Chromogranin A Rabbit Monoclonal Antibody(ARB920)**

CAT. NO. ARB6712

**DATA**

Immunohistochemical staining of human colon tissue using Chromogranin A Rabbit Monoclonal Antibody (ARB920).

**STORAGE**

Store at 4°C short term. For long term storage, store at -20°C, avoiding freeze/thaw cycles.

**NOTE**

For Research Use Only. Not for diagnostic, therapeutics, prophylactic or in vivo use.

More information: [www.arexbio.com](http://www.arexbio.com)