

DATASHEET

CDH17 Rabbit Monoclonal Antibody(ARB917)

CAT. NO. ARB6709

KEY FEATURES

Target	CDH17	Clonality	Monoclonal
Clone ID	ARB917	Applications	IHC
Source / Host	Rabbit	Dilution	1:100-1:200
Reactivity	Human	Storage	at-20°C

BACKGROUND

CDH17 may have a role in the morphological organization of liver and intestine. Involved in intestinal peptide transport. CDH17 expressed in the gastrointestinal tract and pancreatic duct. Not detected in kidney, lung, liver, brain, adrenal gland and skin. CDH17 is a highly specific marker in colon cancer and is a more sensitive marker than CDX2 and CK20. Overexpression of CDH17 correlates to poor prognosis in patients with epithelial ovarian cancer. CDH17 may be helpful for early diagnosis of Barrett's esophagus. CDH17 has been shown to be a useful marker for distinguishing between primary urinary bladder adenocarcinoma and urothelial carcinoma with glandular differentiation.

APPLICATION

To ensure optimal assay performance, AREX recommends conducting reagent titration tailored to each testing system for optimal detection results.

IHC	1:100 - 1:200
-----	---------------

*Results are sample-specific. Please refer to your local assay conditions and test parameters for reference.

PRODUCT OVERVIEW

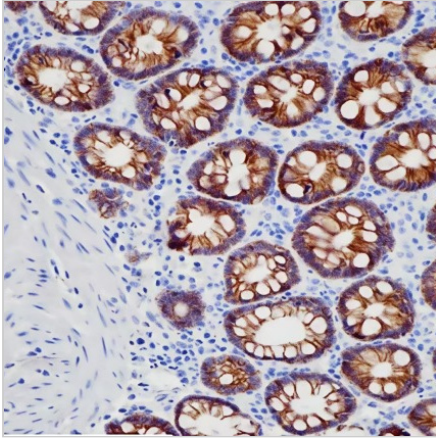
Predicted Molecular Wt	92kDa
Purity	ProA affinity purified IgG
Subcellular location	Membrane
Swissprot ID	Q12864
Immunogen	Recombinant protein fragment of CDH17 was used as an immunogen.
Storage Buffer	PBS 59%, Sodium azide 0.01%, Glycerol 40%, BSA 0.05%.
Recommended Method	Heat induced epitope retrieval with Tris-EDTA buffer (pH 9.0), primary antibody incubate at RT (18°C-25°C) for 30 minutes.

*AREX continuously optimizes our products. Webpage content may not reflect the latest updates. For inquiries, please contact info@arexbio.com or your local distributor.

*Clone Number, Reactivity, Source/Host and Clonality can be found in the product name and Key Features section above.

DATASHEET**CDH17 Rabbit Monoclonal Antibody(ARB917)**

CAT. NO. ARB6709

DATA

Immunohistochemical staining of human colon tissue sections using CDH17 Rabbit Monoclonal Antibody (ARB917).

STORAGE

Store at 4°C short term. For long term storage, store at -20°C, avoiding freeze/thaw cycles.

NOTE

For Research Use Only. Not for diagnostic, therapeutics, prophylactic or in vivo use.

More information: www.arexbio.com