

## DATASHEET

# CD99 Rabbit Monoclonal Antibody(ARB916)

CAT. NO. ARB6708

### KEY FEATURES

Target	CD99	Clonality	Monoclonal
Clone ID	ARB916	Applications	IHC
Source / Host	Rabbit	Dilution	1:100-1:200
Reactivity	Human	Storage	at-20°C

### BACKGROUND

CD99 is a type I transmembrane glycoprotein encoded by the CD99 gene and the functions of CD99 in cells in which CD99 was highly expressed have been studied and they were as follows: cell death of thymocytes and T lymphocytes, migration through monocyte endothelial junctions by adhesion and diapedesis, cell-cell adhesion in lymphocytes, maintenance of cellular morphology in Hodgkin and Reed/Sternberg cells, and recruitment of T cells. CD99 expression has been reported in many cell types, such as hematopoietic cells, endothelial cells, central nervous system ependymal cells, thymocytes, granular cells of the ovary, Sertoli cells, and pancreatic islet cells. And in tumors it expressed by virtually almost all Ewings sarcoma and primitive peripheral neuroectodermal tumors (ES/PMET) and demonstrates strong and diffuse membranous staining. Other tumors that may show CD99 expression include neuroendocrine carcinomas, mesenchymal chondrosarcomas, solitary fibrous tumors, synovial sarcomas, vascular tumors, small round blue cell tumors, lymphoblastic lymphoma, acute myeloid leukemia, and myeloid sarcoma. Studies have shown that CD99 may be a sensitive marker for Ewing's sarcoma and peripheral neuroectodermal tumors.

### APPLICATION

To ensure optimal assay performance, AREX recommends conducting reagent titration tailored to each testing system for optimal detection results.

IHC	1:100 - 1:200
-----	---------------

\*Results are sample-specific. Please refer to your local assay conditions and test parameters for reference.

### PRODUCT OVERVIEW

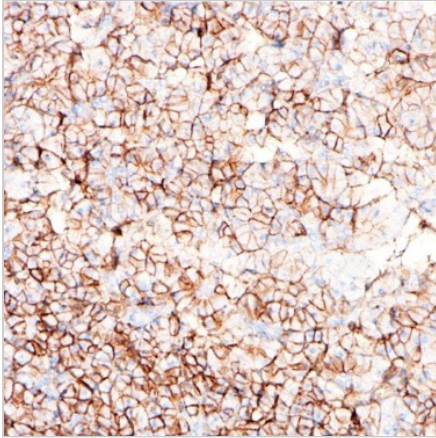
Predicted Molecular Wt	19kDa
Purity	ProA affinity purified IgG
Subcellular location	Membrane
Swissprot ID	P14209
Immunogen	Synthetic peptide corresponding to CD99 residues within aa85-C terminal of CD99.
Storage Buffer	PBS 59%, Sodium azide 0.01%, Glycerol 40%, BSA 0.05%.
Recommended method	Heat induced epitope retrieval with Tris-EDTA buffer (pH 9.0), primary antibody incubate at RT (18°C-25°C) for 30 minutes.

\*AREX continuously optimizes our products. Webpage content may not reflect the latest updates. For inquiries, please contact [info@arexbio.com](mailto:info@arexbio.com) or your local distributor.

\*Clone Number, Reactivity, Source/Host and Clonality can be found in the product name and Key Features section above.

**DATASHEET****CD99 Rabbit Monoclonal Antibody(ARB916)**

CAT. NO. ARB6708

**DATA**

Immunohistochemical staining of human pancreas tissue using CD99 Rabbit Monoclonal Antibody (ARB916).

**STORAGE**

Store at 4°C short term. For long term storage, store at -20°C, avoiding freeze/thaw cycles.

**NOTE**

For Research Use Only. Not for diagnostic, therapeutics, prophylactic or in vivo use.

More information: [www.arexbio.com](http://www.arexbio.com)