

DATASHEET

CD8 Rabbit Monoclonal Antibody(ARB915)

CAT. NO. ARB6707

KEY FEATURES

Target	CD8	Clonality	Monoclonal
Clone ID	ARB915	Applications	IHC
Source / Host	Rabbit	Dilution	1:100-1:200
Reactivity	Human	Storage	at-20°C

BACKGROUND

The CD8 antigen is a cell surface glycoprotein found on most cytotoxic T lymphocytes that serves as a coreceptor for TCR recognition of MHC class I-associated peptides and supports CTL activation by binding to the MHC, while making no direct contact with the peptide. CD8 is expressed on cytotoxic suppressor T cells. It is expressed as a heterodimer of CD8 α and CD8 β . CD8 is expressed on approximately one-third of peripheral blood T cells (the CD4-negative cells). CD8 has also been detected at a low level on some natural killer (NK) cells. In normal human tonsil, large numbers of CD8+ lymphocytes were present within the paracortex; occasionally positive cells were also identified within germinal centers and within the investing squamous epithelium. In other tissues, only lymphoid cells and cells of histiocyte lineage showed positive staining for CD8.

APPLICATION

To ensure optimal assay performance, AREX recommends conducting reagent titration tailored to each testing system for optimal detection results.

IHC	1:100 - 1:200
-----	---------------

*Results are sample-specific. Please refer to your local assay conditions and test parameters for reference.

PRODUCT OVERVIEW

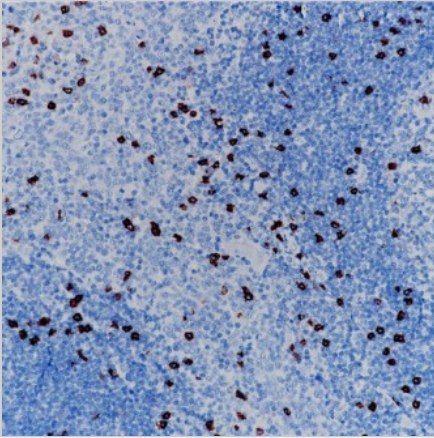
Predicted Molecular Wt	26kDa
Purity	ProA affinity purified IgG
Subcellular location	Membrane
Swissprot ID	P01732
Immunogen	Synthetic peptide corresponding to CD8 α residues within aa135-235 of CD8 α .
Storage Buffer	PBS 59%, Sodium azide 0.01%, Glycerol 40%, BSA 0.05%.
Recommended method	Heat induced epitope retrieval with Tris-EDTA buffer (pH 9.0), primary antibody incubate at RT (18°C-25°C) for 30 minutes.

*AREX continuously optimizes our products. Webpage content may not reflect the latest updates. For inquiries, please contact info@arexbio.com or your local distributor.

*Clone Number, Reactivity, Source/Host and Clonality can be found in the product name and Key Features section above.

DATASHEET**CD8 Rabbit Monoclonal Antibody(ARB915)**

CAT. NO. ARB6707

DATA

Immunohistochemical staining of human tonsil tissue using CD8 Rabbit Monoclonal Antibody (ARB915).

STORAGE

Store at 4°C short term. For long term storage, store at -20°C, avoiding freeze/thaw cycles.

NOTE

For Research Use Only. Not for diagnostic, therapeutics, prophylactic or in vivo use.

More information: www.arexbio.com