

**DATASHEET**

**CD38 Rabbit Monoclonal Antibody(ARB906)**

**CAT. NO. ARB6698**

**KEY FEATURES**

Target	CD38	Clonality	Monoclonal
Clone ID	ARB906	Applications	IHC
Source / Host	Rabbit	Dilution	1:100-1:200
Reactivity	Human	Storage	at-20°C

**BACKGROUND**

CD38, also known as ADP-ribosyl cyclase, synthesizes the second messengers cyclic ADP-ribose and nicotinate-adenine dinucleotide phosphate, the former a second messenger for glucose-induced insulin secretion. CD38 also has cADPr hydrolase activity. It is found on immature cells of the B and T cell lineages but not on most mature resting peripheral lymphocytes. It is also present on thymocytes, pre-B cells, germinal center B cells, mitogen-activated T cells, Ig-secreting plasma cells, monocytes, NK cells, erythroid and myeloid progenitors in the bone marrow and brain cells. CD38 is used to identify plasma cells and plasmablastic differentiation, and evaluate the prognosis for B-cell chronic lymphocytic leukemia (CLL) patients.

**APPLICATION**

To ensure optimal assay performance, AREX recommends conducting reagent titration tailored to each testing system for optimal detection results.

IHC	1:100 - 1:200
-----	---------------

\*Results are sample-specific. Please refer to your local assay conditions and test parameters for reference.

**PRODUCT OVERVIEW**

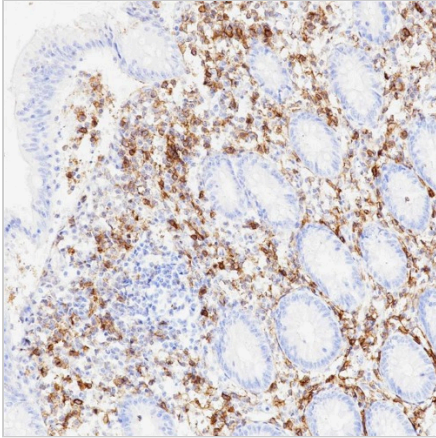
Predicted Molecular Wt	34 kDa
Purity	ProA affinity purified IgG
Subcellular location	Membrane
Swissprot ID	P28907
Immunogen	Synthetic peptide corresponding to residues within aa200-300 of CD38
Storage Buffer	PBS 59%, Sodium azide 0.01%, Glycerol 40%, BSA 0.05%
Recommended method	Heat induced epitope retrieval with Tris-EDTA buffer (pH 9.0), primary antibody incubate at RT (18° C-25° C) for 30 minutes.

\*AREX continuously optimizes our products. Webpage content may not reflect the latest updates. For inquiries, please contact [info@arexbio.com](mailto:info@arexbio.com) or your local distributor.

\*Clone Number, Reactivity, Source/Host and Clonality can be found in the product name and Key Features section above.

**DATASHEET****CD38 Rabbit Monoclonal Antibody(ARB906)**

CAT. NO. ARB6698

**DATA**

Immunohistochemical staining of human appendix tissue sections using CD38 Rabbit Monoclonal Antibody (ARB906). Immunohistochemical staining of human tonsil tissue sections using CD38 Rabbit Monoclonal Antibody (ARB906).

**STORAGE**

Store at 4°C short term. For long term storage, store at -20°C, avoiding freeze/thaw cycles.

**NOTE**

For Research Use Only. Not for diagnostic, therapeutics, prophylactic or in vivo use.

More information: [www.arexbio.com](http://www.arexbio.com)