

DATASHEET

CD31 Rabbit Monoclonal Antibody(ARB903)

CAT. NO. ARB6695

KEY FEATURES

Target	CD31	Clonality	Monoclonal
Clone ID	ARB903	Applications	IHC
Source / Host	Rabbit	Dilution	1:100-1:200
Reactivity	Human	Storage	at-20°C

BACKGROUND

CD31 also designated as PECAM-1 (platelet endothelial cell adhesion molecule 1), is a transmembrane glycoprotein belongs to immunoglobulin superfamily, which is key factor for adhesion and accumulation of platelets. It is present on the surface of platelets, monocytes, macrophages, and neutrophils and is a constituent of the endothelial intercellular junction. CD31 is generally regarded to be the most sensitive and specific endothelial marker in paraffin sections, and is one of the best markers for benign and malignant vascular tumors.

APPLICATION

To ensure optimal assay performance, AREX recommends conducting reagent titration tailored to each testing system for optimal detection results.

IHC	1:100 - 1:200
-----	---------------

*Results are sample-specific. Please refer to your local assay conditions and test parameters for reference.

PRODUCT OVERVIEW

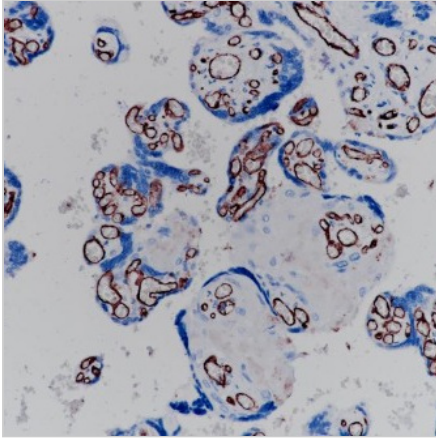
Predicted Molecular Wt	83 kDa
Purity	ProA affinity purified IgG
Subcellular location	Membrane
Swissprot ID	P16284
Immunogen	Synthetic peptide corresponding to CD31 residues within aa634-734 of CD31
Storage Buffer	PBS 59%, Sodium azide 0.01%, Glycerol 40%, BSA 0.05%
Recommended method	Heat induced epitope retrieval with Tris-EDTA buffer (pH 9.0), primary antibody incubate at RT (18° C-25° C) for 30 minutes.

*AREX continuously optimizes our products. Webpage content may not reflect the latest updates. For inquiries, please contact info@arexbio.com or your local distributor.

*Clone Number, Reactivity, Source/Host and Clonality can be found in the product name and Key Features section above.

DATASHEET**CD31 Rabbit Monoclonal Antibody(ARB903)**

CAT. NO. ARB6695

DATA

Immunohistochemical staining of human placenta tissue sections using CD31 Rabbit Monoclonal Antibody (ARB903). Immunohistochemical staining of human uterus tissue sections using CD31 Rabbit Monoclonal Antibody (ARB903).

STORAGE

Store at 4°C short term. For long term storage, store at -20°C, avoiding freeze/thaw cycles.

NOTE

For Research Use Only. Not for diagnostic, therapeutics, prophylactic or in vivo use.

More information: www.arexbio.com