

DATASHEET

CD3 Rabbit Monoclonal Antibody(ARB901)

CAT. NO. ARB6693

KEY FEATURES

Target	CD3	Clone ID	ARB901
Source / Host	Rabbit	Reactivity	Human
Applications	IHC	Dilution	1:100-1:200
Clonality	Monoclonal	Storage	at-20°C

BACKGROUND

The CD3 protein is a T-cell marker, a complex of four structurally distinct membrane glycoprotein isoforms, comprising extracellular, transmembrane and intracellular domains. The CD3 complex is responsible for mediating signal transduction to the internal environment upon antigenic recognition by TCR, causing T-cell proliferation and release of cytokines.

APPLICATION

To ensure optimal assay performance, AREX recommends conducting reagent titration tailored to each testing system for optimal detection results.

Application	Dilution Ratio
IHC	1:100 - 1:200

*Results are sample-specific. Please refer to your local assay conditions and test parameters for reference.

OVERVIEW

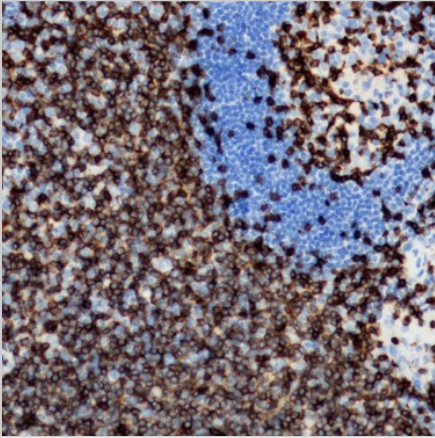
Predicted Molecular Wt	23 kDa
Purity	ProA affinity purified IgG
Subcellular location	Membrane
Swissprot ID	P07766
Immunogen	Synthetic peptide corresponding to CD3E residues within aa1-100
Storage Buffer	PBS 59%, Sodium azide 0.01%, Glycerol 40%, BSA 0.05%
Recommended method	Heat induced epitope retrieval with Tris-EDTA buffer (pH 9.0), primary antibody incubate at RT (18° C- 25° C) for 30 minutes.
Alternative Names	T3D; T-cell surface glycoprotein CD3 delta chain; T-cell receptor T3 delta chain; CD antigen CD3d; T3E; T-cell surface glycoprotein CD3 epsilon chain; T-cell surface antigen T3/Leu-4 epsilon chain; CD antigen CD3e; T3G; T-cell surface glycoprotein CD3 gamma chain; T-cell receptor T3 gamma chain; CD antigen CD3g; CD3Z; T3Z; TCRZ; T-cell surface glycoprotein CD3 zeta chain; T-cell receptor T3 zeta chain; CD antigen CD247
Gene Symbol	CD3D; CD3E; CD3G; CD247
Entrez Gene	919

*AREX continuously optimizes our products. Webpage content may not reflect the latest updates. For inquiries, please contact info@arexbio.com or your local distributor.

*Clone Number, Reactivity, Source/Host and Clonality can be found in the product name and Key Features section above.

DATASHEET**CD3 Rabbit Monoclonal Antibody(ARB901)**

CAT. NO. ARB6693

DATA

Immunohistochemical staining of human tonsil tissue sections using CD3 Rabbit Monoclonal Antibody (ARB901).

STORAGE

Store at 4°C short term. For long term storage, store at -20°C, avoiding freeze/thaw cycles.

NOTE

For Research Use Only. Not for diagnostic, therapeutics, prophylactic or in vivo use.

More information: www.arexbio.com