

**DATASHEET**

**CD25 Rabbit Monoclonal Antibody(ARB900)**

CAT. NO. ARB6692

**KEY FEATURES**

Target	CD25	Clonality	Monoclonal
Clone ID	ARB900	Applications	IHC
Source / Host	Rabbit	Dilution	1:100-1:200
Reactivity	Human	Storage	at-20°C

**BACKGROUND**

CD25, or interleukin 2 (IL2) receptor alpha (IL2RA), and beta (IL2RB) chains, together with the common gamma chain (IL2RG), constitute the high-affinity IL2 receptor. Homodimeric alpha chains (CD25) result in low-affinity receptor, while homodimeric beta (IL2RB) chains produce a medium-affinity receptor. Normally an integral-membrane protein, soluble CD25 has been isolated and determined to result from extracellular proteolysis. CD25 (the p55 chain of the interleukin-2 receptor) is a marker of activation for a number of cell types, including T cells, B cells, and macrophages. It also appears to be a reliable immunohistochemical marker for the discrimination of neoplastic from normal/reactive mast cells, with potential as a diagnostic tool in systemic mastocytosis. CD25 is also expressed on hairy cell leukemia.

**APPLICATION**

To ensure optimal assay performance, AREX recommends conducting reagent titration tailored to each testing system for optimal detection results.

IHC	1:100 - 1:200
-----	---------------

\*Results are sample-specific. Please refer to your local assay conditions and test parameters for reference.

**PRODUCT OVERVIEW**

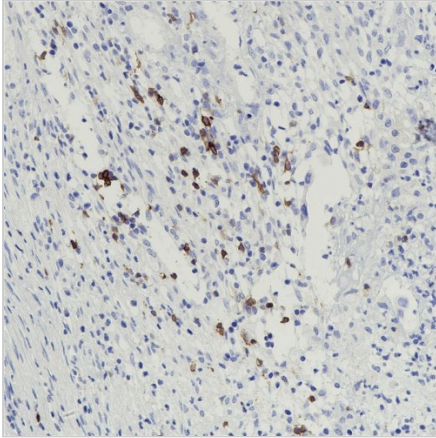
Predicted Molecular Wt	31 kDa
Purity	ProA affinity purified IgG
Subcellular location	Membrane
Swissprot ID	P01589
Immunogen	Recombinant fragment of Human IL-2 Receptor alpha with residues aa1-250
Storage Buffer	PBS 59%, Sodium azide 0.01%, Glycerol 40%, BSA 0.05%
Recommended method	Heat induced epitope retrieval with Tris-EDTA buffer (pH 9.0), primary antibody incubate at RT (18° C-25° C) for 30 minutes.

\*AREX continuously optimizes our products. Webpage content may not reflect the latest updates. For inquiries, please contact [info@arexbio.com](mailto:info@arexbio.com) or your local distributor.

\*Clone Number, Reactivity, Source/Host and Clonality can be found in the product name and Key Features section above.

**DATASHEET****CD25 Rabbit Monoclonal Antibody(ARB900)**

CAT. NO. ARB6692

**DATA**

Immunohistochemical staining of human colon carcinoma tissue sections using CD25 Rabbit Monoclonal Antibody (ARB900).

**STORAGE**

Store at 4°C short term. For long term storage, store at -20°C, avoiding freeze/thaw cycles.

**NOTE**

For Research Use Only. Not for diagnostic, therapeutics, prophylactic or in vivo use.

More information: [www.arexbio.com](http://www.arexbio.com)