

DATASHEET

CD23 Rabbit Monoclonal Antibody(ARB899)

CAT. NO. ARB6691

KEY FEATURES

Target	CD23	Clonality	Monoclonal
Clone ID	ARB899	Applications	IHC
Source / Host	Rabbit	Dilution	1:100-1:200
Reactivity	Human	Storage	at-20°C

BACKGROUND

CD23 antigen is a transmembrane glycoprotein by various hematopoietic cell types and functions as a low-affinity receptor for IgE. CD23 is involved in regulating IgE production and has other potential biologic functions, including promoting the survival of germinal center B lymphocytes. CD23 is found in some mature B-cell lymphomas and in Reed-Sternberg cells in Hodgkin disease. Follicular dendritic cells and some activated B-cells within germinal centers express CD23 in high density and mantle zone B-cells are stained weakly. The majority of chronic lymphocytic leukemias/small lymphocytic lymphomas are CD23 positive, whereas mantle cell lymphomas are generally negative. CD23 has been shown to be useful for the differentiation of small lymphocytic lymphomas and mantle cell lymphoma. CD23 is used to differentiate between small lymphocytic lymphoma (positive) and mantle cell lymphoma (negative).

APPLICATION

To ensure optimal assay performance, AREX recommends conducting reagent titration tailored to each testing system for optimal detection results.

IHC	1:100 - 1:200
-----	---------------

*Results are sample-specific. Please refer to your local assay conditions and test parameters for reference.

PRODUCT OVERVIEW

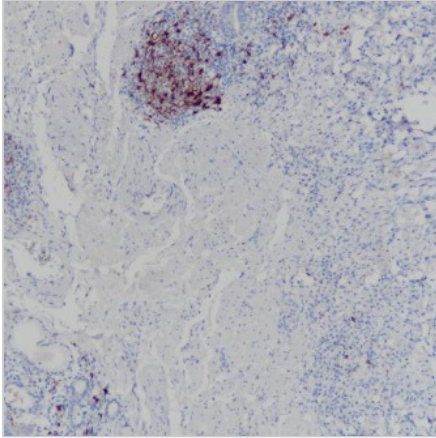
Predicted Molecular Wt	36 kDa
Purity	ProA affinity purified IgG
Subcellular location	Membrane
Swissprot ID	P06734
Immunogen	Synthetic peptide corresponding to CD23 residues within aa221-321 of CD23
Storage Buffer	PBS 59%, Sodium azide 0.01%, Glycerol 40%, BSA 0.05%
Recommended method	Heat induced epitope retrieval with Tris-EDTA buffer (pH 9.0), primary antibody incubate at RT (18° C-25° C) for 30 minutes.

*AREX continuously optimizes our products. Webpage content may not reflect the latest updates. For inquiries, please contact info@arexbio.com or your local distributor.

*Clone Number, Reactivity, Source/Host and Clonality can be found in the product name and Key Features section above.

DATASHEET**CD23 Rabbit Monoclonal Antibody(ARB899)**

CAT. NO. ARB6691

DATA

Immunohistochemical staining of human tonsil tissue sections using CD23 Rabbit Monoclonal Antibody (ARB899). Immunohistochemical staining of human uterus tissue sections using CD23 Rabbit Monoclonal Antibody (ARB899).

STORAGE

Store at 4°C short term. For long term storage, store at -20°C, avoiding freeze/thaw cycles.

NOTE

For Research Use Only. Not for diagnostic, therapeutics, prophylactic or in vivo use.

More information: www.arexbio.com