

**DATASHEET**

**CD20 Rabbit Monoclonal Antibody(ARB896)**

**CAT. NO. ARB6688**

**KEY FEATURES**

Target	CD20	Clonality	Monoclonal
Clone ID	ARB896	Applications	IHC
Source / Host	Rabbit	Dilution	1:100-1:200
Reactivity	Human	Storage	at-20°C

**BACKGROUND**

CD20 is a membrane-embedded 33kDa nonglycosylated phosphoprotein which play a role in B-cell activation, differentiation, and cell-cycle progression. CD20 is a restricted B-cell antigen and its clinical utility is greatest for identifying B-lineage non-Hodgkin's lymphomas, but it can also aid in the diagnosis of nodular lymphocyte predominance Hodgkin's disease and acute lymphoblastic neoplasms.

**APPLICATION**

To ensure optimal assay performance, AREX recommends conducting reagent titration tailored to each testing system for optimal detection results.

IHC	1:100 - 1:200
-----	---------------

\*Results are sample-specific. Please refer to your local assay conditions and test parameters for reference.

**PRODUCT OVERVIEW**

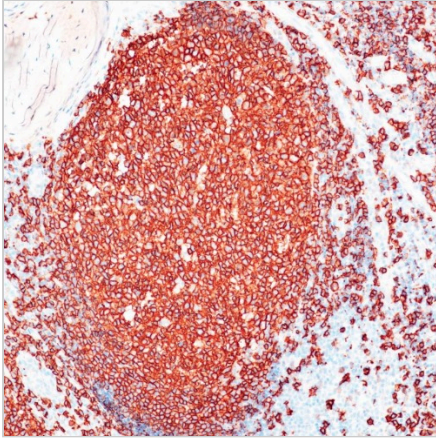
Predicted Molecular Wt	33 kDa
Purity	ProA affinity purified IgG
Subcellular location	Membrane
Swissprot ID	P11836
Immunogen	Synthetic peptide corresponding to CD20 residues within aa197-C terminal of CD20
Storage Buffer	PBS 59%, Sodium azide 0.01%, Glycerol 40%, BSA 0.05%
Recommended method	Heat induced epitope retrieval with Tris-EDTA buffer (pH 9.0), primary antibody incubate at RT (18° C-25° C) for 30 minutes.

\*AREX continuously optimizes our products. Webpage content may not reflect the latest updates. For inquiries, please contact [info@arexbio.com](mailto:info@arexbio.com) or your local distributor.

\*Clone Number, Reactivity, Source/Host and Clonality can be found in the product name and Key Features section above.

**DATASHEET****CD20 Rabbit Monoclonal Antibody(ARB896)**

CAT. NO. ARB6688

**DATA**

Immunohistochemical staining of human tonsil tissue sections using CD20 Rabbit Monoclonal Antibody (ARB896). Immunohistochemical staining of human appendix tissue sections using CD20 Rabbit Monoclonal Antibody (ARB896).

**STORAGE**

Store at 4°C short term. For long term storage, store at -20°C, avoiding freeze/thaw cycles.

**NOTE**

For Research Use Only. Not for diagnostic, therapeutics, prophylactic or in vivo use.

More information: [www.arexbio.com](http://www.arexbio.com)