

DATASHEET

CD2 Rabbit Monoclonal Antibody(ARB895)

CAT. NO. ARB6687

KEY FEATURES

Target	CD2	Clonality	Monoclonal
Clone ID	ARB895	Applications	IHC
Source / Host	Rabbit	Dilution	1:100-1:200
Reactivity	Human	Storage	at-20°C

BACKGROUND

CD2 is mainly present on the surface of mature T cells and NK cell membranes, while B cells are usually not expressed. It can be used to label the diagnosis and study of normal T cells and their associated tumors, such as pre-t cell lymphoma, marginal T cell lymphoma and anaplastic cell lymphoma. CD2 antibody is useful for identification of precursor and mature T-cell lymphomas. Aberrant loss of CD2 in T-cell lymphomas may help to distinguish them from reactive T-cell proliferations.

APPLICATION

To ensure optimal assay performance, AREX recommends conducting reagent titration tailored to each testing system for optimal detection results.

IHC	1:100 - 1:200
-----	---------------

*Results are sample-specific. Please refer to your local assay conditions and test parameters for reference.

PRODUCT OVERVIEW

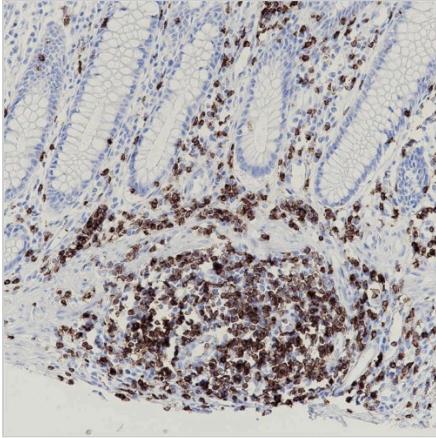
Predicted Molecular Wt	39 kDa
Purity	ProA affinity purified IgG
Subcellular location	Membrane
Swissprot ID	P06729
Immunogen	Synthetic peptide corresponding to residues within N-Term of CD2
Storage Buffer	PBS 59%, Sodium azide 0.01%, Glycerol 40%, BSA 0.05%
Recommended method	Heat induced epitope retrieval with Tris-EDTA buffer (pH 9.0), primary antibody incubate at RT (18° C-25° C) for 30 minutes.

*AREX continuously optimizes our products. Webpage content may not reflect the latest updates. For inquiries, please contact info@arexbio.com or your local distributor.

*Clone Number, Reactivity, Source/Host and Clonality can be found in the product name and Key Features section above.

DATASHEET**CD2 Rabbit Monoclonal Antibody(ARB895)**

CAT. NO. ARB6687

DATA

Immunohistochemical staining of human appendix tissue sections using CD2 Rabbit Monoclonal Antibody (ARB895). Immunohistochemical staining of human tonsil tissue sections using CD2 Rabbit Monoclonal Antibody (ARB895).

STORAGE

Store at 4°C short term. For long term storage, store at -20°C, avoiding freeze/thaw cycles.

NOTE

For Research Use Only. Not for diagnostic, therapeutics, prophylactic or in vivo use.

More information: www.arexbio.com