

DATASHEET

CD1a Rabbit Monoclonal Antibody(ARB894)

CAT. NO. ARB6686

KEY FEATURES

Target	CD1a	Clonality	Monoclonal
Clone ID	ARB894	Applications	IHC
Source / Host	Rabbit	Dilution	1:100-1:200
Reactivity	Human	Storage	at-20°C

BACKGROUND

CD1a is a member of the family group 1 CD1 proteins (CD1a, CD1b, and CD1c), which share the capacity to present microbial lipid antigens to cells. CD1a is expressed predominantly on Langerhans cells (LCs), it can be expressed by T-cells under certain conditions. Immature thymocytes express CD1a, as do some T-cells involved in neoplastic conditions such as pre-lymphoblastic lymphomas/leukemias and follicular dendritic cell sarcoma. CD1a expression on pathogenic Langerhans cells (LCs) in LCH is regarded as a hallmark of this disease and may as a potential target for future therapeutic strategies against inflammatory skin diseases.

APPLICATION

To ensure optimal assay performance, AREX recommends conducting reagent titration tailored to each testing system for optimal detection results.

IHC	1:100 - 1:200
-----	---------------

*Results are sample-specific. Please refer to your local assay conditions and test parameters for reference.

PRODUCT OVERVIEW

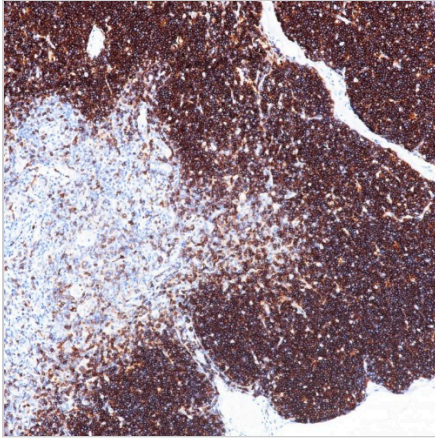
Predicted Molecular Wt	37 kDa
Purity	ProA affinity purified IgG
Subcellular location	Membrane
Swissprot ID	P06126
Immunogen	Synthetic peptide corresponding to CD1a residues within aa1-100
Storage Buffer	PBS 59%, Sodium azide 0.01%, Glycerol 40%, BSA 0.05%
Recommended method	Heat induced epitope retrieval with Tris-EDTA buffer (pH 9.0), primary antibody incubate at RT (18° C-25° C) for 30 minutes.

*AREX continuously optimizes our products. Webpage content may not reflect the latest updates. For inquiries, please contact info@arexbio.com or your local distributor.

*Clone Number, Reactivity, Source/Host and Clonality can be found in the product name and Key Features section above.

DATASHEET**CD1a Rabbit Monoclonal Antibody(ARB894)**

CAT. NO. ARB6686

DATA

Immunohistochemical staining of human thymus tissue sections using CD1a Rabbit Monoclonal Antibody (ARB894).

STORAGE

Store at 4°C short term. For long term storage, store at -20°C, avoiding freeze/thaw cycles.

NOTE

For Research Use Only. Not for diagnostic, therapeutics, prophylactic or in vivo use.

More information: www.arexbio.com