

## DATASHEET

# CD19 Rabbit Monoclonal Antibody(ARB893)

CAT. NO. ARB6685

### KEY FEATURES

Target	CD19	Clonality	Monoclonal
Clone ID	ARB893	Applications	IHC
Source / Host	Rabbit	Dilution	1:100-1:200
Reactivity	Human	Storage	at-20°C

### BACKGROUND

The human CD19 antigen is a transmembrane glycoprotein belonging to the immunoglobulin (Ig) superfamily, which initiates a series of biological responses that are likely to be of central importance to B-cell signaling and/or growth regulation and the development of a humoral immune response. CD19 is specifically expressed in normal and neoplastic B cells, as well as follicular dendritic cells. In normal tissues, it is expressed from pre-B cells until the terminal differentiation to plasma cells. And in tumors, its expression is highly conserved on most B cell tumors. It is expressed in most acute lymphoblastic leukemias (ALL), chronic lymphocytic leukemias (CLL) and B cell lymphomas. CD19 is one of the most reliable surface biomarker for B cells and the CD19 monoclonal antibodies have been explored for lymphoma therapy.

### APPLICATION

To ensure optimal assay performance, AREX recommends conducting reagent titration tailored to each testing system for optimal detection results.

IHC	1:100 - 1:200
-----	---------------

\*Results are sample-specific. Please refer to your local assay conditions and test parameters for reference.

### PRODUCT OVERVIEW

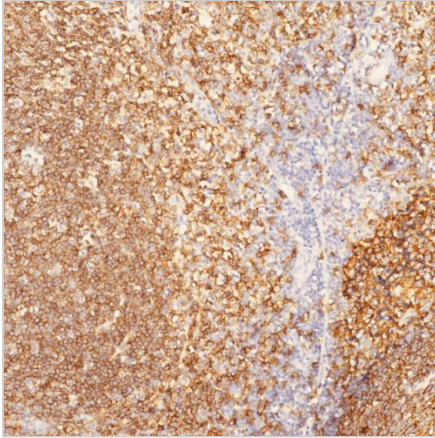
Predicted Molecular Wt	61 kDa
Purity	ProA affinity purified IgG
Subcellular location	Membrane
Swissprot ID	P15391
Immunogen	Synthetic peptide corresponding to CD19 residues within aa456-556 of CD19
Storage Buffer	PBS 59%, Sodium azide 0.01%, Glycerol 40%, BSA 0.05%
Recommended method	Heat induced epitope retrieval with Tris-EDTA buffer (pH 9.0), primary antibody incubate at RT (18° C-25° C) for 30 minutes.

\*AREX continuously optimizes our products. Webpage content may not reflect the latest updates. For inquiries, please contact [info@arexbio.com](mailto:info@arexbio.com) or your local distributor.

\*Clone Number, Reactivity, Source/Host and Clonality can be found in the product name and Key Features section above.

**DATASHEET****CD19 Rabbit Monoclonal Antibody(ARB893)**

CAT. NO. ARB6685

**DATA**

Immunohistochemical staining of human tonsil tissue sections using CD19 Rabbit Monoclonal Antibody (ARB893). Immunohistochemical staining of human diffuse large B-cell lymphoma (DLBCL) tissue sections using CD19 Rabbit Monoclonal Antibody (ARB893).

**STORAGE**

Store at 4°C short term. For long term storage, store at -20°C, avoiding freeze/thaw cycles.

**NOTE**

For Research Use Only. Not for diagnostic, therapeutics, prophylactic or in vivo use.

More information: [www.arexbio.com](http://www.arexbio.com)