

DATASHEET

CD14 Rabbit Monoclonal Antibody(ARB890)

CAT. NO. ARB6682

KEY FEATURES

Target	CD14	Clonality	Monoclonal
Clone ID	ARB890	Applications	IHC
Source / Host	Rabbit	Dilution	1:100-1:200
Reactivity	Human	Storage	at-20°C

BACKGROUND

CD14 is receptor for endotoxin and apoptotic cells. It is expressed by monocytes/histiocytes, Langerhans' cells, follicular dendritic reticulum cells, neutrophils (weakly), and endothelial cells of the liver sinusoids. CD14 is detected in myeloid leukaemias with monoblastic/monocytic differentiation, and in histiocytic neoplasms like histiocytic lymphoma, Langerhans' cell histiocytosis and giant cell tumour. In cultures, a subpopulation of Kaposi sarcoma cells express CD14. In differential diagnosis, CD14 is more specific than CD68 in the identification of monocytes/histiocytes and associated neoplasias.

APPLICATION

To ensure optimal assay performance, AREX recommends conducting reagent titration tailored to each testing system for optimal detection results.

IHC	1:100 - 1:200
-----	---------------

*Results are sample-specific. Please refer to your local assay conditions and test parameters for reference.

PRODUCT OVERVIEW

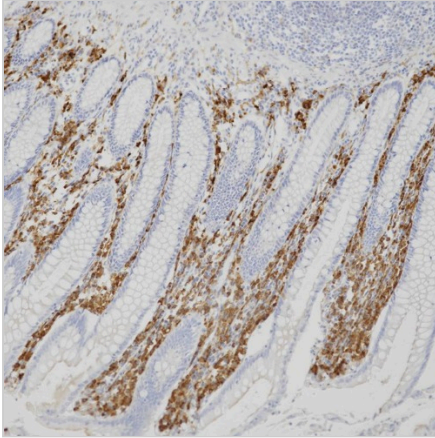
Predicted Molecular Wt	40 kDa
Purity	ProA affinity purified IgG
Subcellular location	Membrane
Swissprot ID	P08571
Immunogen	Synthetic peptide corresponding to residues within aa1-100 of CD14
Storage Buffer	PBS 59%, Sodium azide 0.01%, Glycerol 40%, BSA 0.05%
Recommended method	Heat induced epitope retrieval with Tris-EDTA buffer (pH 9.0), primary antibody incubate at RT (18° C-25° C) for 30 minutes.

*AREX continuously optimizes our products. Webpage content may not reflect the latest updates. For inquiries, please contact info@arexbio.com or your local distributor.

*Clone Number, Reactivity, Source/Host and Clonality can be found in the product name and Key Features section above.

DATASHEET**CD14 Rabbit Monoclonal Antibody(ARB890)**

CAT. NO. ARB6682

DATA

Immunohistochemical staining of human appendiceal tissue sections using CD14 Rabbit Monoclonal Antibody (ARB890). Immunohistochemical staining of human lung adenocarcinoma tissue sections using CD14 Rabbit Monoclonal Antibody (ARB890).

STORAGE

Store at 4°C short term. For long term storage, store at -20°C, avoiding freeze/thaw cycles.

NOTE

For Research Use Only. Not for diagnostic, therapeutics, prophylactic or in vivo use.

More information: www.arexbio.com