

DATASHEET

Calreticulin Rabbit Monoclonal Antibody(ARB888)

CAT. NO. ARB6680

KEY FEATURES

Target	Calreticulin	Clonality	Monoclonal
Clone ID	ARB888	Applications	IHC
Source / Host	Rabbit	Dilution	1:100-1:200
Reactivity	Human	Storage	at-20°C

BACKGROUND

Calcium is a universal signaling molecule involved in many cellular functions, such as cell motility, metabolism, protein modification, et al. Calcium is stored in the endoplasmic reticulum (ER), where it is buffered by calcium binding chaperones such as calnexin and calreticulin. Calreticulin also functions as an ER chaperone that ensures proper folding and quality control of newly synthesized glycoproteins. Calreticulin is expressed in all kinds of normal tissues and tumor tissues. Calreticulin purified from tumor can stimulate the anti-tumor immune response of the body, the possible mechanism is that the calreticulin molecule binds to the tumor antigen polypeptide, and in the process of calreticulin into the cell membrane, the tumor antigen peptide bound with it is brought to the cell membrane and presented to the antigen-presenting cell, thus stimulating the anti-tumor immune effect of the body. Calreticulin purified from tumor can stimulate the anti-tumor immune response of the body, the possible mechanism is that the calreticulin molecule binds to the tumor antigen polypeptide, and in the process of calreticulin into the cell membrane, the tumor antigen peptide bound with it is brought to the cell membrane and presented to the antigen-presenting cell, thus stimulating the anti-tumor immune effect of the body.

APPLICATION

To ensure optimal assay performance, AREX recommends conducting reagent titration tailored to each testing system for optimal detection results.

IHC	1:100 - 1:200
-----	---------------

*Results are sample-specific. Please refer to your local assay conditions and test parameters for reference.

PRODUCT OVERVIEW

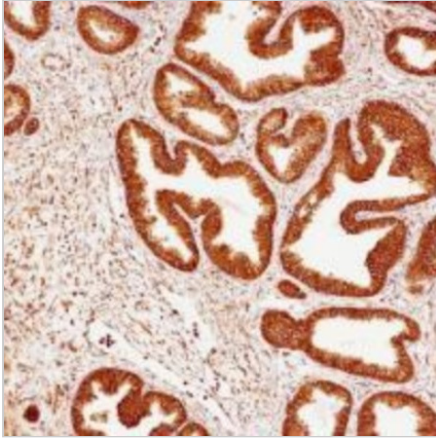
Predicted Molecular Wt	48 kDa
Purity	ProA affinity purified IgG
Subcellular location	Cytoplasm
Swissprot ID	P27797
Immunogen	Synthetic peptide
Storage Buffer	PBS 59%, Sodium azide 0.01%, Glycerol 40%, BSA 0.05%
Recommended method	Heat induced epitope retrieval with Tris-EDTA buffer (pH 9.0), primary antibody incubate at RT (18° C-25° C) for 30 minutes.

*AREX continuously optimizes our products. Webpage content may not reflect the latest updates. For inquiries, please contact info@arexbio.com or your local distributor.

*Clone Number, Reactivity, Source/Host and Clonality can be found in the product name and Key Features section above.

DATASHEET**Calreticulin Rabbit Monoclonal Antibody(ARB888)**

CAT. NO. ARB6680

DATA

Immunohistochemical staining of human lung adenocarcinoma tissue sections using Calreticulin Rabbit Monoclonal Antibody (ARB888).

STORAGE

Store at 4°C short term. For long term storage, store at -20°C, avoiding freeze/thaw cycles.

NOTE

For Research Use Only. Not for diagnostic, therapeutics, prophylactic or in vivo use.

More information: www.arexbio.com