

DATASHEET

Caldesmon Mouse Monoclonal Antibody(ARB886)

CAT. NO. ARB6678

KEY FEATURES

| | | | |
|---------------|-----------|--------------|-------------|
| Target | Caldesmon | Clonality | Monoclonal |
| Clone ID | ARB886 | Applications | IHC |
| Source / Host | Mouse | Dilution | 1:100-1:200 |
| Reactivity | Human | Storage | at-20°C |

BACKGROUND

Anti-caldesmon is a regulatory protein found in smooth muscle and other tissues which interacts with actin, myosin, tropomyosin, and calmodulin. Anti-caldesmon antibody labels smooth muscle and tumors of smooth muscle, myofibroblastic, and myoepithelial differentiation. Anti-caldesmon has also been used to differentiate epithelioid mesothelioma from serous papillary carcinoma of the ovary.

APPLICATION

To ensure optimal assay performance, AREX recommends conducting reagent titration tailored to each testing system for optimal detection results.

| | |
|-----|---------------|
| IHC | 1:100 - 1:200 |
|-----|---------------|

*Results are sample-specific. Please refer to your local assay conditions and test parameters for reference.

PRODUCT OVERVIEW

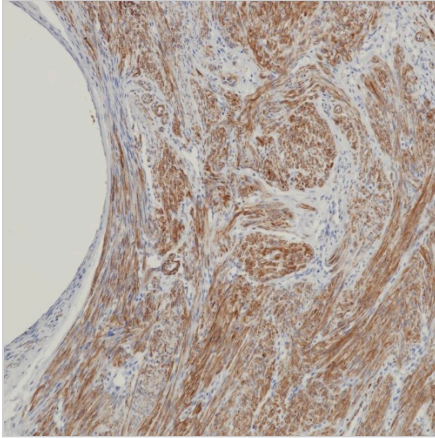
| | |
|------------------------|--|
| Predicted Molecular Wt | 93.2 kDa |
| Purity | ProG affinity purified IgG |
| Subcellular location | Cytoplasm |
| Swissprot ID | Q05682 |
| Immunogen | Synthetic peptide of Caldesmon |
| Storage Buffer | PBS 59%, Sodium azide 0.01%, Glycerol 40%, BSA 0.05% |
| Recommended method | Heat induced epitope retrieval with Tris-EDTA buffer (pH 9.0), primary antibody incubate at RT (18° C-25° C) for 30 minutes. |

*AREX continuously optimizes our products. Webpage content may not reflect the latest updates. For inquiries, please contact info@arexbio.com or your local distributor.

*Clone Number, Reactivity, Source/Host and Clonality can be found in the product name and Key Features section above.

DATASHEET**Caldesmon Mouse Monoclonal Antibody(ARB886)**

CAT. NO. ARB6678

DATA

Immunohistochemical staining of human leiomyoma tissue sections using Caldesmon Mouse Monoclonal Antibody (ARB886).

STORAGE

Store at 4°C short term. For long term storage, store at -20°C, avoiding freeze/thaw cycles.

NOTE

For Research Use Only. Not for diagnostic, therapeutics, prophylactic or in vivo use.

More information: www.arexbio.com