

## DATASHEET

# CA125 Rabbit Monoclonal Antibody(ARB884)

CAT. NO. ARB6676

### KEY FEATURES

Target	CA125	Clonality	Monoclonal
Clone ID	ARB884	Applications	IHC
Source / Host	Rabbit	Dilution	1:100-1:200
Reactivity	Human	Storage	at-20°C

### BACKGROUND

CA125 (cancer antigen 125, carcinoma antigen 125, or carbohydrate antigen 125) also known as mucin 16, is a member of the mucin family glycoproteins. CA125 is a component of the ocular surface (including the cornea and conjunctiva), the respiratory tract and the female reproductive tract epithelia. Since CA125 is highly glycosylated it creates a hydrophilic environment that acts as a lubricating barrier against foreign particles and infectious agents on the apical membrane of epithelial cells. CA125 reacts with both normal tissues and neoplasms of fallopian tube, endometrium, endocervix and mesothelioma. It does not react with colon cancer. Normal tissues such as breast, liver, skin, kidney and spleen are also negative. Studies have shown that CA125 reacts with approximately 80% of epithelial ovarian neoplasms of serous, endometrioid, clear cell and undifferentiated types. No reactivity has been shown for mucinous ovarian tumors or in germ cell or hematopoietic tumors. This antibody is a useful aid for classification of a variety of tumors, such as some adenocarcinomas of the colon, breast carcinomas, malignant mesothelioma, uterine adenomatoid tumor, lung bronchoalveolar carcinoma, and ovarian endometrioid and serous carcinomas.

### APPLICATION

To ensure optimal assay performance, AREX recommends conducting reagent titration tailored to each testing system for optimal detection results.

IHC	1:100 - 1:200
-----	---------------

\*Results are sample-specific. Please refer to your local assay conditions and test parameters for reference.

### PRODUCT OVERVIEW

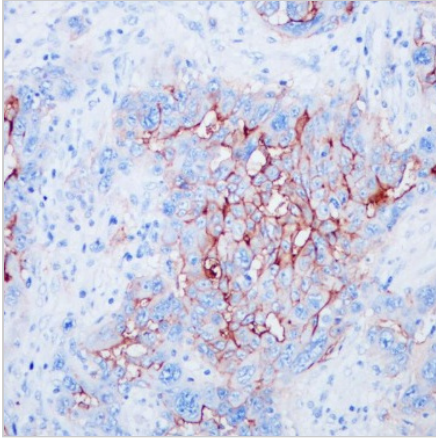
Predicted Molecular Wt	1519 kDa
Purity	ProA affinity purified IgG
Subcellular location	Membrane
Swissprot ID	Q8WXI7
Immunogen	Synthetic peptide corresponding to CA125 residues within aa12201-12300
Storage Buffer	PBS 59%, Sodium azide 0.01%, Glycerol 40%, BSA 0.05%
Recommended method	Heat induced epitope retrieval with Tris-EDTA buffer (pH 9.0), primary antibody incubate at RT (18° C-25° C) for 30 minutes.

\*AREX continuously optimizes our products. Webpage content may not reflect the latest updates. For inquiries, please contact [info@arexbio.com](mailto:info@arexbio.com) or your local distributor.

\*Clone Number, Reactivity, Source/Host and Clonality can be found in the product name and Key Features section above.

**DATASHEET****CA125 Rabbit Monoclonal Antibody(ARB884)**

CAT. NO. ARB6676

**DATA**

Immunohistochemical staining of human ovarian carcinoma tissue sections using CA125 Rabbit Monoclonal Antibody (ARB884). Immunohistochemical staining of human lung adenocarcinoma tissue sections using CA125 Rabbit Monoclonal Antibody (ARB884).

**STORAGE**

Store at 4°C short term. For long term storage, store at -20°C, avoiding freeze/thaw cycles.

**NOTE**

For Research Use Only. Not for diagnostic, therapeutics, prophylactic or in vivo use.

More information: [www.arexbio.com](http://www.arexbio.com)