

DATASHEET

Beta-Catenin Rabbit Monoclonal Antibody(ARB882)

CAT. NO. ARB6674

KEY FEATURES

Target	Beta-Catenin	Clonality	Monoclonal
Clone ID	ARB882	Applications	IHC
Source / Host	Rabbit	Dilution	1:100-1:200
Reactivity	Human	Storage	at-20°C

BACKGROUND

Beta-Catenin is a key regulatory protein in Wnt signaling, a pathway that transmits signals from the cytoplasm to the nucleus, turning on the expression of specific genes in the nucleus. Under normal conditions, Beta-Catenin exists mainly in the cell membrane of normal cells, and gene mutations lead to accumulation in the nucleus. At present, Beta-Catenin gene mutation has been found in various tumors, such as colon cancer, lung cancer, prostate cancer, esophageal cancer, breast cancer, ovarian cancer, endometrial cancer, familial adenomatous polyposis, solid pseudopapilloma of pancreas, etc. High levels of nucleus positivity are seen in desmoid fibromatosis, isolated fibrous tumors, synovial sarcomas and endometrial stromal sarcomas, and carcinosarcomas. It is mainly used for the diagnosis, invasion and metastasis of malignant tumor.

APPLICATION

To ensure optimal assay performance, AREX recommends conducting reagent titration tailored to each testing system for optimal detection results.

IHC	1:100 - 1:200
-----	---------------

*Results are sample-specific. Please refer to your local assay conditions and test parameters for reference.

PRODUCT OVERVIEW

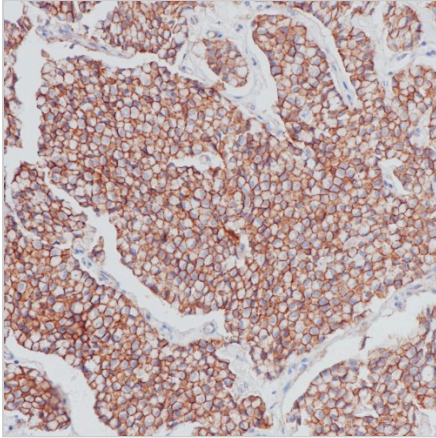
Predicted Molecular Wt	86 kDa
Purity	ProA affinity purified IgG
Subcellular location	Membrane & Cytoplasm & Nucleus
Swissprot ID	P35222
Immunogen	Synthetic peptide corresponding to Human Beta-Catenin
Storage Buffer	PBS 59%, Sodium azide 0.01%, Glycerol 40%, BSA 0.05%
Recommended method	Heat induced epitope retrieval with Tris-EDTA buffer (pH 9.0), primary antibody incubate at RT (18° C-25° C) for 30 minutes.

*AREX continuously optimizes our products. Webpage content may not reflect the latest updates. For inquiries, please contact info@arexbio.com or your local distributor.

*Clone Number, Reactivity, Source/Host and Clonality can be found in the product name and Key Features section above.

DATASHEET**Beta-Catenin Rabbit Monoclonal Antibody(ARB882)**

CAT. NO. ARB6674

DATA

Immunohistochemical staining of human breast carcinoma tissue sections using Beta-Catenin Rabbit Monoclonal Antibody (ARB882).

STORAGE

Store at 4°C short term. For long term storage, store at -20°C, avoiding freeze/thaw cycles.

NOTE

For Research Use Only. Not for diagnostic, therapeutics, prophylactic or in vivo use.

More information: www.arexbio.com