

DATASHEET

Bcl-6 Rabbit Monoclonal Antibody(ARB880)

CAT. NO. ARB6672

KEY FEATURES

Target	Bcl-6	Clonality	Monoclonal
Clone ID	ARB880	Applications	IHC
Source / Host	Rabbit	Dilution	1:100-1:200
Reactivity	Human	Storage	at-20°C

BACKGROUND

Bcl-6 is a transcriptional regulator gene which codes for a 706-amino-acid nuclear zinc finger protein. The mitogen-activated protein kinases, Erk1 and Erk2, but not JNK, phosphorylate BCL6 at multiple sites. Phosphorylation of BCL6 at Ser333 and Ser343 results in degradation of BCL6 by the ubiquitin/proteasome pathway in B cells. In addition, BCL6 is acetylated and its transcriptional repressor function is inhibited by the transcriptional co-activator p300. Antibodies to this protein stain the germinal center cells in lymphoid follicles, follicular cells and interfollicular cells in Follicular Lymphoma, Diffuse Large B-Cell Lymphomas, Burkitt's Lymphoma, and the majority of the Reed-Sternberg cells in Nodular Lymphocyte-Predominant Hodgkin's Disease. Bcl-6 combined with CD10 can be used to distinguish follicular lymphoma from other lymphomas. Bcl-6 combined with CD10 and MUM1 can be used for the classification of diffuse large B-cell lymphoma.

APPLICATION

To ensure optimal assay performance, AREX recommends conducting reagent titration tailored to each testing system for optimal detection results.

IHC	1:100 - 1:200
-----	---------------

*Results are sample-specific. Please refer to your local assay conditions and test parameters for reference.

PRODUCT OVERVIEW

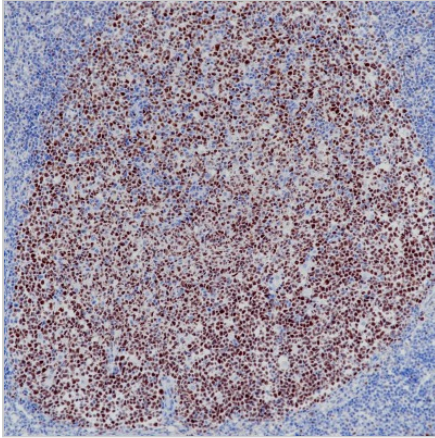
Predicted Molecular Wt	79 kDa
Purity	ProA affinity purified IgG
Subcellular Location	Nucleus
Swissprot ID	P41182
Immunogen	Recombinant protein fragment
Storage Buffer	PBS 59%, Sodium azide 0.01%, Glycerol 40%, BSA 0.05%

*AREX continuously optimizes our products. Webpage content may not reflect the latest updates. For inquiries, please contact info@arexbio.com or your local distributor.

*Clone Number, Reactivity, Source/Host and Clonality can be found in the product name and Key Features section above.

DATASHEET**Bcl-6 Rabbit Monoclonal Antibody(ARB880)**

CAT. NO. ARB6672

DATA

Immunohistochemical staining of human tonsillar tissue sections using Bcl-6 Rabbit Monoclonal Antibody (ARB880).

STORAGE

Store at 4°C short term. For long term storage, store at -20°C, avoiding freeze/thaw cycles.

NOTE

For Research Use Only. Not for diagnostic, therapeutics, prophylactic or in vivo use.

More information: www.arexbio.com