

DATASHEET

Bcl-6 Rabbit Monoclonal Antibody(ARB879)

CAT. NO. ARB6671

KEY FEATURES

Target	Bcl-6	Clonality	Monoclonal
Clone ID	ARB879	Applications	IHC
Source / Host	Rabbit	Dilution	1:100-1:200
Reactivity	Human	Storage	at-20°C

BACKGROUND

Bcl-6 is a transcriptional regulator gene which codes for a 706-amino-acid nuclear zinc finger protein. The mitogen-activated protein kinases, Erk1 and Erk2, but not JNK, phosphorylate BCL6 at multiple sites. Phosphorylation of BCL6 at Ser333 and Ser343 results in degradation of BCL6 by the ubiquitin/proteasome pathway in B cells. In addition, BCL6 is acetylated and its transcriptional repressor function is inhibited by the transcriptional co-activator p300.

APPLICATION

To ensure optimal assay performance, AREX recommends conducting reagent titration tailored to each testing system for optimal detection results.

IHC	1:100 - 1:200
-----	---------------

*Results are sample-specific. Please refer to your local assay conditions and test parameters for reference.

PRODUCT OVERVIEW

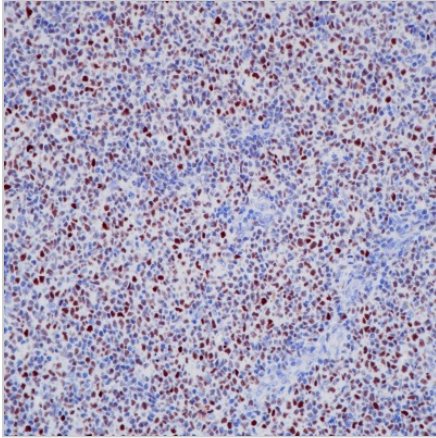
Predicted Molecular Wt	79 kDa
Purity	ProA affinity purified IgG
Subcellular location	Nucleus
Swissprot ID	P41182
Immunogen	Recombinant fragment
Storage Buffer	PBS 59%, Sodium azide 0.01%, Glycerol 40%, BSA 0.05%
Recommended method	Heat induced epitope retrieval with Tris-EDTA buffer (pH 9.0), primary antibody incubate at RT (18° C-25° C) for 30 minutes.

*AREX continuously optimizes our products. Webpage content may not reflect the latest updates. For inquiries, please contact info@arexbio.com or your local distributor.

*Clone Number, Reactivity, Source/Host and Clonality can be found in the product name and Key Features section above.

DATASHEET**Bcl-6 Rabbit Monoclonal Antibody(ARB879)**

CAT. NO. ARB6671

DATA

Immunohistochemical staining of human follicular lymphoma tissue sections using Bcl-6 Rabbit Monoclonal Antibody (ARB879). Immunohistochemical staining of human tonsillar tissue sections using Bcl-6 Rabbit Monoclonal Antibody (ARB879).

STORAGE

Store at 4°C short term. For long term storage, store at -20°C, avoiding freeze/thaw cycles.

NOTE

For Research Use Only. Not for diagnostic, therapeutics, prophylactic or in vivo use.

More information: www.arexbio.com