

DATASHEET

Bcl-2 Mouse Monoclonal Antibody(ARB878)

CAT. NO. ARB6670

KEY FEATURES

Target	Bcl-2	Clonality	Monoclonal
Clone ID	ARB878	Applications	IHC
Source / Host	Mouse	Dilution	1:100-1:200
Reactivity	Human	Storage	at-20°C

BACKGROUND

B - Cell Lymphoma 2 (BCL2) is involved in regulation of cell apoptosis by controlling mitochondrial permeability and release of cytochrome c. It also has critical roles in normal cell physiology related to neuronal activity, autophagy, calcium handling, mitochondrial dynamics, and energetics. BCL2 overexpression has been shown to promote cell survival by suppressing apoptosis, and is found to be correlated with poor disease prognosis in breast, prostate, ovarian, endometrial, and colon cancers. In follicular lymphoma, Anti - BCL2 reacts negatively with germinal centers and positively with neoplastic follicles. In lymphoid lesions, BCL2 staining is useful for distinguishing reactive and neoplastic follicular proliferations, and for identifying minimal residual disease in the bone marrow of follicular lymphoma patients. BCL2 is now a useful target of human cancer therapy.

APPLICATION

To ensure optimal assay performance, AREX recommends conducting reagent titration tailored to each testing system for optimal detection results.

IHC	1:100 - 1:200
-----	---------------

*Results are sample-specific. Please refer to your local assay conditions and test parameters for reference.

PRODUCT OVERVIEW

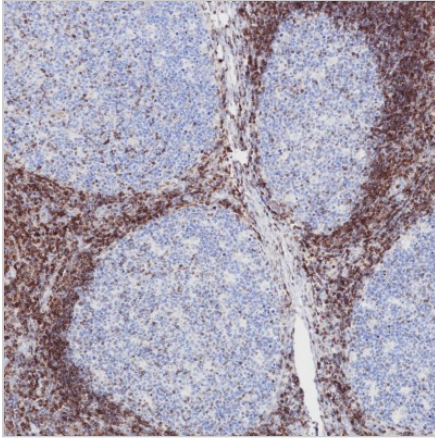
Predicted Molecular Wt	26 kDa
Purity	ProG affinity purified IgG
Subcellular location	Membrane
Swissprot ID	P10415
Immunogen	Synthetic peptide of Human BCL-2
Storage Buffer	PBS 59%, Sodium azide 0.01%, Glycerol 40%, BSA 0.05%
Recommended method	Heat induced epitope retrieval with Tris-EDTA buffer (pH 9.0), primary antibody incubate at RT (18° C-25° C) for 30 minutes.

*AREX continuously optimizes our products. Webpage content may not reflect the latest updates. For inquiries, please contact info@arexbio.com or your local distributor.

*Clone Number, Reactivity, Source/Host and Clonality can be found in the product name and Key Features section above.

DATASHEET**Bcl-2 Mouse Monoclonal Antibody(ARB878)**

CAT. NO. ARB6670

DATA

Immunohistochemical staining of human tonsillar tissue sections using Bcl-2 Mouse Monoclonal Antibody (ARB878). Immunohistochemical staining of human follicular lymphoma tissue sections using Bcl-2 Mouse Monoclonal Antibody (ARB878).

STORAGE

Store at 4°C short term. For long term storage, store at -20°C, avoiding freeze/thaw cycles.

NOTE

For Research Use Only. Not for diagnostic, therapeutics, prophylactic or in vivo use.

More information: www.arexbio.com