

DATASHEET

BAP-1 Rabbit Monoclonal Antibody(ARB877)

CAT. NO. ARB6669

KEY FEATURES

Target	BAP-1	Clonality	Monoclonal
Clone ID	ARB877	Applications	IHC
Source / Host	Rabbit	Dilution	1:100-1:200
Reactivity	Human	Storage	at-20°C

BACKGROUND

BAP-1 (BRCA-1 Associated Protein-1) is an 80 kDa protein known to function as a deubiquitinase (DUB); removing ubiquitin modifiers, which alter the function of other proteins via targeted degradation, subcellular localization, or activity. By removing ubiquitin, BAP-1 helps regulate the function of target proteins involved in diverse cellular processes. BAP-1 was expressed in most normal cells, but deletion of expression has been found in mesothelioma. Germline mutations in the BAP-1 gene have been associated with BAP-1 tumor predisposition syndrome, a condition linked to early onset and/or increased risk of multiple types of cancers including uveal melanoma, malignant mesothelioma, cutaneous melanoma, and renal cell carcinoma."

APPLICATION

To ensure optimal assay performance, AREX recommends conducting reagent titration tailored to each testing system for optimal detection results.

IHC	1:100 - 1:200
-----	---------------

*Results are sample-specific. Please refer to your local assay conditions and test parameters for reference.

PRODUCT OVERVIEW

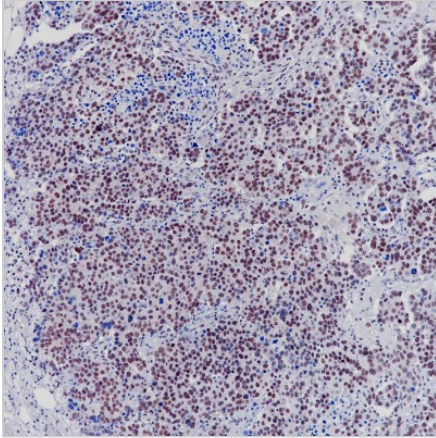
Predicted Molecular Wt	80 kDa
Purity	ProA affinity purified IgG
Subcellular location	Nucleus
Swissprot ID	Q92560
Immunogen	Synthetic peptide
Storage Buffer	PBS 59%, Sodium azide 0.01%, Glycerol 40%, BSA 0.05%
Recommended method	Heat induced epitope retrieval with Tris-EDTA buffer (pH 9.0), primary antibody incubate at RT (18° C-25° C) for 30 minutes.

*AREX continuously optimizes our products. Webpage content may not reflect the latest updates. For inquiries, please contact info@arexbio.com or your local distributor.

*Clone Number, Reactivity, Source/Host and Clonality can be found in the product name and Key Features section above.

DATASHEET**BAP-1 Rabbit Monoclonal Antibody(ARB877)**

CAT. NO. ARB6669

DATA

Immunohistochemical staining of human mesothelioma tissue sections using BAP-1 Rabbit Monoclonal Antibody (ARB877).

STORAGE

Store at 4°C short term. For long term storage, store at -20°C, avoiding freeze/thaw cycles.

NOTE

For Research Use Only. Not for diagnostic, therapeutics, prophylactic or in vivo use.

More information: www.arexbio.com