

**DATASHEET**

**ATRX Rabbit Monoclonal Antibody(ARB876)**

CAT. NO. ARB6668

**KEY FEATURES**

|               |        |              |             |
|---------------|--------|--------------|-------------|
| Target        | ATRX   | Clonality    | Monoclonal  |
| Clone ID      | ARB876 | Applications | IHC         |
| Source / Host | Rabbit | Dilution     | 1:100-1:200 |
| Reactivity    | Human  | Storage      | at-20°C     |

**BACKGROUND**

α-thalassemia/mental retardation X-linked (ATRX) is a transcriptional regulator and helicase that belongs to the SNF2 family of chromatin remodeling proteins. Together with its binding partner death-associated protein 6 (Daxx), ATRX acts as histone chaperone to deposit histone variant H3.3 at repetitive DNA sequences such as telomeric, pericentric, and ribosomal gene repeats. ATRX is involved in many nuclear functions that ensure proper sister chromatid cohesion during mitosis and chromosome alignment during meiosis.

**APPLICATION**

To ensure optimal assay performance, AREX recommends conducting reagent titration tailored to each testing system for optimal detection results.

|     |               |
|-----|---------------|
| IHC | 1:100 - 1:200 |
|-----|---------------|

\*Results are sample-specific. Please refer to your local assay conditions and test parameters for reference.

**PRODUCT OVERVIEW**

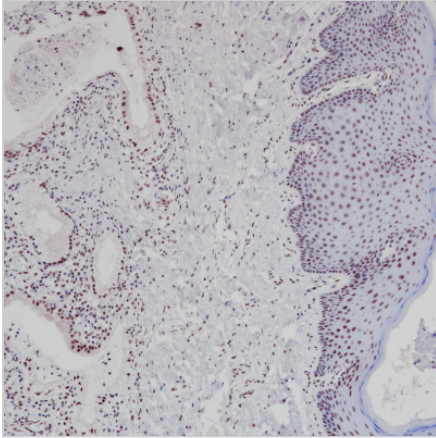
|                        |                                                                                                                              |
|------------------------|------------------------------------------------------------------------------------------------------------------------------|
| Predicted Molecular Wt | 283 kDa                                                                                                                      |
| Purity                 | ProA affinity purified IgG                                                                                                   |
| Subcellular location   | Nucleus                                                                                                                      |
| Swissprot ID           | P46100                                                                                                                       |
| Immunogen              | Recombinant protein fragment within Human ATRX                                                                               |
| Storage Buffer         | PBS 59%, Sodium azide 0.01%, Glycerol 40%, BSA 0.05%                                                                         |
| Recommended method     | Heat induced epitope retrieval with Tris-EDTA buffer (pH 9.0), primary antibody incubate at RT (18° C-25° C) for 30 minutes. |

\*AREX continuously optimizes our products. Webpage content may not reflect the latest updates. For inquiries, please contact [info@arexbio.com](mailto:info@arexbio.com) or your local distributor.

\*Clone Number, Reactivity, Source/Host and Clonality can be found in the product name and Key Features section above.

**DATASHEET****ATRX Rabbit Monoclonal Antibody(ARB876)**

CAT. NO. ARB6668

**DATA**

Immunohistochemical staining of human cervical tissue sections using ATRX Rabbit Monoclonal Antibody (ARB876).

**STORAGE**

Store at 4°C short term. For long term storage, store at -20°C, avoiding freeze/thaw cycles.

**NOTE**

For Research Use Only. Not for diagnostic, therapeutics, prophylactic or in vivo use.

More information: [www.arexbio.com](http://www.arexbio.com)