

## DATASHEET

# ACE2 Rabbit Monoclonal Antibody(ARB867)

CAT. NO. ARB6659

### KEY FEATURES

Target	ACE2	Clonality	Monoclonal
Clone ID	ARB867	Applications	IHC
Source / Host	Rabbit	Dilution	1:100-1:200
Reactivity	Human	Storage	at-20°C

### BACKGROUND

Carboxypeptidase which converts angiotensin I to angiotensin 1-9, a peptide of unknown function, and angiotensin II to angiotensin 1-7, a vasodilator. Also able to hydrolyze apelin-13 and dynorphin-13 with high efficiency. By cleavage of angiotensin II, may be an important regulator of heart function. By cleavage of angiotensin II, may also have a protective role in acute lung injury. Plays an important role in amino acid transport by acting as binding partner of amino acid transporter SL6A19 in intestine, regulating trafficking, expression on the cell surface, and its catalytic activity. Acts as a receptor for SARS coronavirus/SARS-CoV. Acts as a receptor for Human coronavirus NL63/HCoV-NL63.

### APPLICATION

To ensure optimal assay performance, AREX recommends conducting reagent titration tailored to each testing system for optimal detection results.

IHC	1:100 - 1:200
-----	---------------

\*Results are sample-specific. Please refer to your local assay conditions and test parameters for reference.

### PRODUCT OVERVIEW

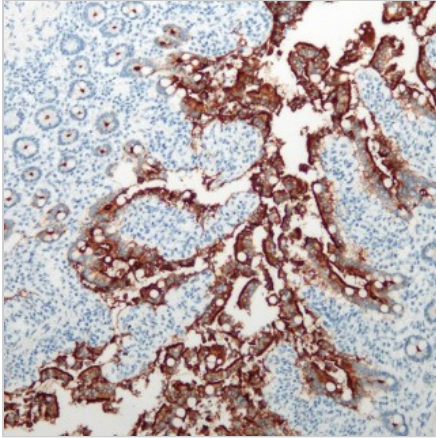
Predicted Molecular Wt	92 kDa
Purity	ProA affinity purified IgG
Subcellular location	Membrane and Secreted
Swissprot ID	Q9BYF1
Immunogen	Synthetic peptide within Human ACE2 aa 750-850
Storage Buffer	PBS 59%, Sodium azide 0.01%, Glycerol 40%, BSA 0.05%
Recommended method	Heat induced epitope retrieval with Tris-EDTA buffer (pH 9.0), primary antibody incubate at RT (18° C-25° C) for 30 minutes.

\*AREX continuously optimizes our products. Webpage content may not reflect the latest updates. For inquiries, please contact [info@arexbio.com](mailto:info@arexbio.com) or your local distributor.

\*Clone Number, Reactivity, Source/Host and Clonality can be found in the product name and Key Features section above.

**DATASHEET****ACE2 Rabbit Monoclonal Antibody(ARB867)**

CAT. NO. ARB6659

**DATA**

Immunohistochemical staining of human small intestinal tissue sections for ACE2 using ACE2 Rabbit Monoclonal Antibody (ARB867). Immunohistochemical staining of human testicular tissue sections for ACE2 using ACE2 Rabbit Monoclonal Antibody (ARB867).

**STORAGE**

Store at 4°C short term. For long term storage, store at -20°C, avoiding freeze/thaw cycles.

**NOTE**

For Research Use Only. Not for diagnostic, therapeutics, prophylactic or in vivo use.

More information: [www.arexbio.com](http://www.arexbio.com)