

DATASHEET

Brachyury Rabbit Monoclonal Antibody(ARB866)

CAT. NO. ARB6658

KEY FEATURES

Target	Brachyury	Clonality	Monoclonal
Clone ID	ARB866	Applications	IHC
Source / Host	Rabbit	Dilution	1:100-1:200
Reactivity	Human	Storage	at-20°C

BACKGROUND

Brachyury protein, encoded by the T gene, is a transcription factor that is vital for the formation of posterior mesoderm and axial development during vertebrate embryogenesis. Human brachyury is expressed in the notochord, as well as in chordoma tumors that occur along the spine, making it a good marker for notochord and notochord-derived tumors. A common polymorphism in the human T gene has also been shown to be associated with development of the multifactorial neural tube defect, spina bifida.

APPLICATION

To ensure optimal assay performance, AREX recommends conducting reagent titration tailored to each testing system for optimal detection results.

IHC	1:100 - 1:200
-----	---------------

*Results are sample-specific. Please refer to your local assay conditions and test parameters for reference.

PRODUCT OVERVIEW

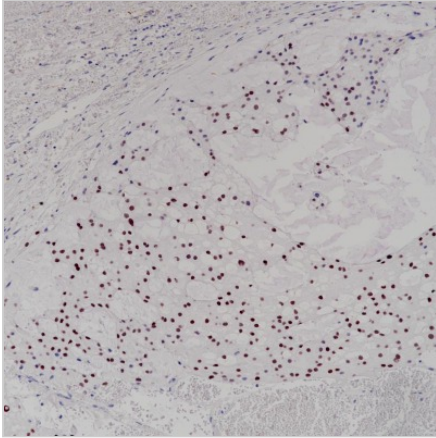
Predicted Molecular Wt	47 kDa
Purity	ProA affinity purified IgG
Subcellular location	Nucleus
Swissprot ID	O15178
Immunogen	Recombinant fragment
Storage Buffer	PBS 59%, Sodium azide 0.01%, Glycerol 40%, BSA 0.05%
Recommended method	Heat induced epitope retrieval with Tris-EDTA buffer (pH 9.0), primary antibody incubate at RT (18° C-25° C) for 30 minutes.

*AREX continuously optimizes our products. Webpage content may not reflect the latest updates. For inquiries, please contact info@arexbio.com or your local distributor.

*Clone Number, Reactivity, Source/Host and Clonality can be found in the product name and Key Features section above.

DATASHEET**Brachyury Rabbit Monoclonal Antibody(ARB866)**

CAT. NO. ARB6658

DATA

Immunohistochemical staining of human chordoma tissue sections using Brachyury Rabbit Monoclonal Antibody (ARB866).

STORAGE

Store at 4°C short term. For long term storage, store at -20°C, avoiding freeze/thaw cycles.

NOTE

For Research Use Only. Not for diagnostic, therapeutics, prophylactic or in vivo use.

More information: www.arexbio.com