

## DATASHEET

# FOXP1 Rabbit Monoclonal Antibody(ARB861)

CAT. NO. ARB6653

### KEY FEATURES

Target	FOXP1	Clonality	Monoclonal
Clone ID	ARB861	Applications	IHC
Source / Host	Rabbit	Dilution	1:100-1:200
Reactivity	Human	Storage	at-20°C

### BACKGROUND

FOXP1 protein plays an important role in the specification and differentiation of lung epithelium, also acts cooperatively with FOXP4 to regulate lung secretory epithelial cell fate and regeneration by restricting the goblet cell lineage program. FOXP1 is useful in subclassification of DLBCL and a high cutoff ( $\geq 80\%$ ) for FOXP1 is needed to achieve high specificity for the ABC subtype.

### APPLICATION

To ensure optimal assay performance, AREX recommends conducting reagent titration tailored to each testing system for optimal detection results.

IHC	1:100 - 1:200
-----	---------------

\*Results are sample-specific. Please refer to your local assay conditions and test parameters for reference.

### PRODUCT OVERVIEW

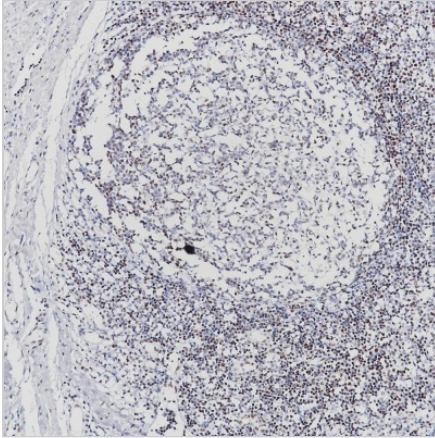
Predicted Molecular Wt	75 kDa
Purity	ProA affinity purified IgG
Subcellular location	Nucleus
Swissprot ID	Q9H334
Immunogen	Synthetic peptide corresponding to residues within aa350-450 of FOXP1
Storage Buffer	PBS 59%, Sodium azide 0.01%, Glycerol 40%, BSA 0.05%
Recommended method	Heat induced epitope retrieval with Tris-EDTA buffer (pH 9.0), primary antibody incubate at RT (18° C-25° C) for 30 minutes.

\*AREX continuously optimizes our products. Webpage content may not reflect the latest updates. For inquiries, please contact [info@arexbio.com](mailto:info@arexbio.com) or your local distributor.

\*Clone Number, Reactivity, Source/Host and Clonality can be found in the product name and Key Features section above.

**DATASHEET****FOXP1 Rabbit Monoclonal Antibody(ARB861)**

CAT. NO. ARB6653

**DATA**

Immunohistochemical staining of human tonsillar tissue sections using FOXP1 Rabbit Monoclonal Antibody (ARB861). Immunohistochemical staining of human diffuse large B cell lymphoma (DLBCL) tissue sections using FOXP1 Rabbit Monoclonal Antibody (ARB861).

**STORAGE**

Store at 4°C short term. For long term storage, store at -20°C, avoiding freeze/thaw cycles.

**NOTE**

For Research Use Only. Not for diagnostic, therapeutics, prophylactic or in vivo use.

More information: [www.arexbio.com](http://www.arexbio.com)