

DATASHEET

Type I Cytokeratins Rabbit Monoclonal Antibody(ARB857)

CAT. NO. ARB6648

KEY FEATURES

Target	Type I Cytokeratins	Clonality	Monoclonal
Clone ID	ARB857	Applications	IHC
Source / Host	Rabbit	Dilution	1:100-1:200
Reactivity	Human	Storage	at-20°C

BACKGROUND

The keratins are the typical intermediate filament proteins of epithelia, showing an outstanding degree of molecular diversity. Heteropolymeric filaments are formed by pairing of type I and type II molecules. In humans 54 functional keratin genes exist. They are expressed in highly specific patterns related to the epithelial type and stage of cellular differentiation. This antibody can detect high molecular weight CK10, CK14, CK15 and CK16 and low molecular weight CK19. It is usually used in a cytokeratin cocktail with type II cytokeratin antibody.

APPLICATION

To ensure optimal assay performance, AREX recommends conducting reagent titration tailored to each testing system for optimal detection results.

IHC	1:100 - 1:200
-----	---------------

*Results are sample-specific. Please refer to your local assay conditions and test parameters for reference.

PRODUCT OVERVIEW

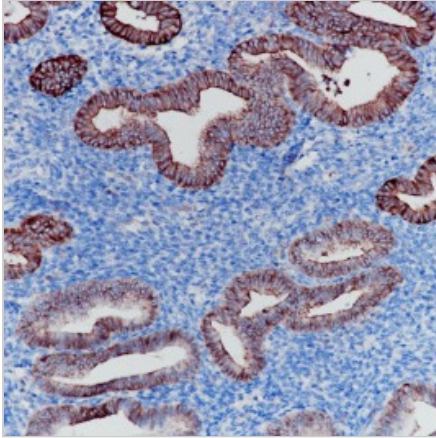
Predicted Molecular Wt	60/53/51/45/40 kDa
Purity	ProA affinity purified IgG
Subcellular location	Cytoplasm
Swissprot ID	Not available
Immunogen	Synthetic peptide corresponding to Type I Cytokeratins residues within aa100-200 of Type I Cytokeratins
Storage Buffer	PBS 59%, Sodium azide 0.01%, Glycerol 40%, BSA 0.05%
Recommended method	Heat induced epitope retrieval with Tris-EDTA buffer (pH 9.0), primary antibody incubate at RT (18° C-25° C) for 30 minutes.

*AREX continuously optimizes our products. Webpage content may not reflect the latest updates. For inquiries, please contact info@arexbio.com or your local distributor.

*Clone Number, Reactivity, Source/Host and Clonality can be found in the product name and Key Features section above.

DATASHEET**Type I Cytokeratins Rabbit Monoclonal Antibody(ARB857)**

CAT. NO. ARB6648

DATA

Immunohistochemical staining of human uterine tissue sections using Type I Cytokeratins Rabbit Monoclonal Antibody (ARB857). Immunohistochemical staining of human cervical carcinoma tissue sections using Type I Cytokeratins Rabbit Monoclonal Antibody (ARB857).

STORAGE

Store at 4°C short term. For long term storage, store at -20°C, avoiding freeze/thaw cycles.

NOTE

For Research Use Only. Not for diagnostic, therapeutics, prophylactic or in vivo use.

More information: www.arexbio.com