

DATASHEET

Cytokeratin 18 Rabbit Monoclonal Antibody(ARB856)

CAT. NO. ARB6646

KEY FEATURES

Target	Cytokeratin 18	Clonality	Monoclonal
Clone ID	ARB856	Applications	IHC
Source / Host	Rabbit	Dilution	1:100-1:200
Reactivity	Human	Storage	at-20°C

BACKGROUND

Cytokeratin 18 (also named keratin 18) is a type I cytokeratin. It is, together with its filament partner keratin 8, perhaps the most commonly found products of the intermediate filament gene family. In some epithelial cell types, keratin 8 and keratin 18 are the sole keratins present. The classical example is the liver, with keratin 8/keratin 18 representing the characteristic and only keratin pair of normal hepatocytes. The same is true for other highly specialized parenchymatous epithelia such as acinar cells of the pancreas, proximal tubular epithelial cells of the kidney, and certain endocrine cells such as pancreatic islet cells. Furthermore, keratin 8/keratin 18 occur together with other keratins—in various pseudostratified (e.g. respiratory) and complex (e.g. glandular) epithelia and in the urothelium; in these composite epithelial tissues, keratin 8 and keratin 18 are often most prominent in the lumen-lining cells. Even in non-keratinizing stratified squamous epithelia, keratin 8 and keratin 18 may be focally expressed in the basal cell layer, together with keratin 19 and the constitutive stratified-epithelial keratins. In regard to malignant tumors, keratin 8 and keratin 18 are expressed in most carcinomas except for some differentiated squamous cell carcinomas. Therefore, keratin 8 and keratin 18 antibody strongly stain most adenocarcinomas, hepatocellular carcinomas, renal cell carcinomas, and neuroendocrine carcinomas.

APPLICATION

To ensure optimal assay performance, AREX recommends conducting reagent titration tailored to each testing system for optimal detection results.

IHC	1:100 - 1:200
-----	---------------

*Results are sample-specific. Please refer to your local assay conditions and test parameters for reference.

PRODUCT OVERVIEW

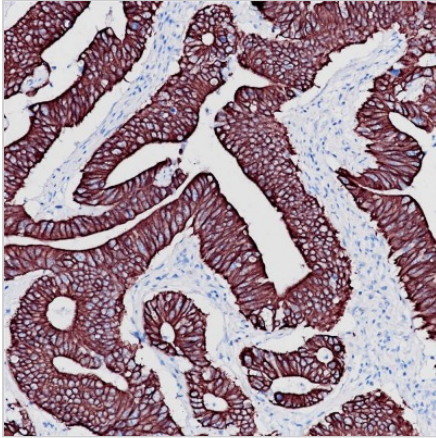
Predicted Molecular Wt	48 kDa
Purity	ProA affinity purified IgG
Subcellular location	Cytoplasm
Swissprot ID	P05783
Immunogen	Synthetic peptide corresponding to cytokeratin 18 residues within aa330-430
Storage Buffer	PBS 59%, Sodium azide 0.01%, Glycerol 40%, BSA 0.05%
Recommended method	Heat induced epitope retrieval with Tris-EDTA buffer (pH 9.0), primary antibody incubate at RT (18° C-25° C) for 30 minutes.

*AREX continuously optimizes our products. Webpage content may not reflect the latest updates. For inquiries, please contact info@arexbio.com or your local distributor.

*Clone Number, Reactivity, Source/Host and Clonality can be found in the product name and Key Features section above.

DATASHEET**Cytokeratin 18 Rabbit Monoclonal Antibody(ARB856)**

CAT. NO. ARB6646

DATA

Immunohistochemical staining of human colon adenocarcinoma tissue sections using Cytokeratin 18 Rabbit Monoclonal Antibody (ARB856). Immunohistochemical staining of human liver tissue sections using Cytokeratin 18 Rabbit Monoclonal Antibody (ARB856).

STORAGE

Store at 4°C short term. For long term storage, store at -20°C, avoiding freeze/thaw cycles.

NOTE

For Research Use Only. Not for diagnostic, therapeutics, prophylactic or in vivo use.

More information: www.arexbio.com