

## DATASHEET

# MSH2 Mouse Monoclonal Antibody(ARB849)

CAT. NO. ARB6639

### KEY FEATURES

Target	MSH2	Clonality	Monoclonal
Clone ID	ARB849	Applications	IHC
Source / Host	Mouse	Dilution	1:100-1:200
Reactivity	Human	Storage	at-20°C

### BACKGROUND

MSH2 is a 105 kDa nuclear antigen and encodes a protein of 934 amino acids. The MSH2 antibody gene is one of only 4 known to encode proteins involved in the repair of mismatch nucleotides following DNA replication or repair. Mutations in the MSH2 gene contribute to the development of sporadic colorectal carcinoma. MSH2 mutations are responsible for 50% of hereditary nonpolyposis colorectal cancer (HNPCC). The repair of mismatch DNA is essential to maintaining the integrity of genetic information over time. An alteration of microsatellite repeats is the result of slippage owing to strand misalignment during DNA replication and is referred to as microsatellite instability (MSI). These defects in DNA repair pathways have been related to human carcinogenesis. MSH-2 is involved in the initial cognition of mismatch nucleotides during the replication mismatch repair process. It is thought that after MSH2 binds to a mismatched DNA duplex it is joined by a heterodimer of MLH1 and PMSH, which together help facilitate the later steps in mismatch repair.

### APPLICATION

To ensure optimal assay performance, AREX recommends conducting reagent titration tailored to each testing system for optimal detection results.

IHC	1:100 - 1:200
-----	---------------

\*Results are sample-specific. Please refer to your local assay conditions and test parameters for reference.

### PRODUCT OVERVIEW

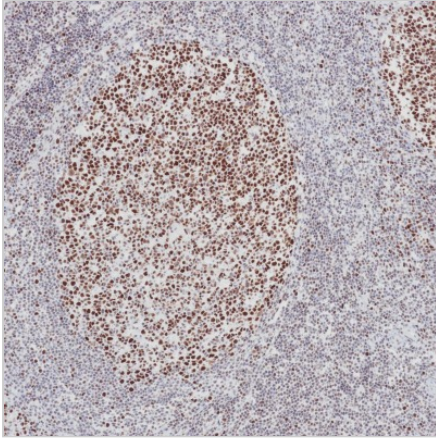
Predicted Molecular Wt	105 kDa
Purity	ProG affinity purified IgG
Subcellular location	Nucleus
Swissprot ID	P43246
Immunogen	Recombinant fragment of human MSH2 protein
Storage Buffer	PBS 59%, Sodium azide 0.01%, Glycerol 40%, BSA 0.05%
Recommended method	Heat induced epitope retrieval with Tris-EDTA buffer (pH 9.0), primary antibody incubate at RT (18° C-25° C) for 30 minutes.

\*AREX continuously optimizes our products. Webpage content may not reflect the latest updates. For inquiries, please contact [info@arexbio.com](mailto:info@arexbio.com) or your local distributor.

\*Clone Number, Reactivity, Source/Host and Clonality can be found in the product name and Key Features section above.

**DATASHEET****MSH2 Mouse Monoclonal Antibody(ARB849)**

CAT. NO. ARB6639

**DATA**

Immunohistochemical staining of human tonsillar tissue sections using MSH2 Mouse Monoclonal Antibody (ARB849). Immunohistochemical staining of human colorectal carcinoma tissue sections using MSH2 Mouse Monoclonal Antibody (ARB849).

**STORAGE**

Store at 4°C short term. For long term storage, store at -20°C, avoiding freeze/thaw cycles.

**NOTE**

For Research Use Only. Not for diagnostic, therapeutics, prophylactic or in vivo use.

More information: [www.arexbio.com](http://www.arexbio.com)