

DATASHEET

PAX8 Rabbit Monoclonal Antibody(ARB846)

CAT. NO. ARB6636

KEY FEATURES

Target	PAX8	Clonality	Monoclonal
Clone ID	ARB846	Applications	IHC
Source / Host	Rabbit	Dilution	1:100-1:200
Reactivity	Human	Storage	at-20°C

BACKGROUND

PAX-8 is a transcription factor expressed during embryonic development of Müllerian organs, kidney, and thyroid, with continued expression in some epithelial cell types of these mature tissues. It can be useful for marking several types of carcinoma including ovarian serous carcinoma, clear cell renal cell carcinoma, and papillary thyroid carcinoma. Additionally, PAX-8 is not found in the epithelial cells of the breast, lung, mesothelium, stomach, colon, pancreas and other sites.

APPLICATION

To ensure optimal assay performance, AREX recommends conducting reagent titration tailored to each testing system for optimal detection results.

IHC	1:100 - 1:200
-----	---------------

*Results are sample-specific. Please refer to your local assay conditions and test parameters for reference.

PRODUCT OVERVIEW

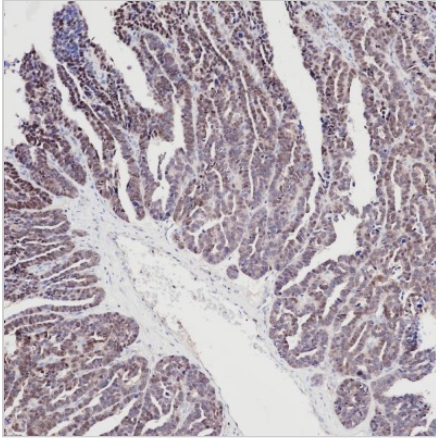
Predicted Molecular Wt	48 kDa
Purity	ProA affinity purified IgG
Subcellular location	Nucleus
Swissprot ID	Q06710
Immunogen	Synthetic peptide corresponding to PAX-8
Storage Buffer	PBS 59%, Sodium azide 0.01%, Glycerol 40%, BSA 0.05%
Recommended method	Heat induced epitope retrieval with Tris-EDTA buffer (pH 9.0), primary antibody incubate at RT (18° C-25° C) for 30 minutes.

*AREX continuously optimizes our products. Webpage content may not reflect the latest updates. For inquiries, please contact info@arexbio.com or your local distributor.

*Clone Number, Reactivity, Source/Host and Clonality can be found in the product name and Key Features section above.

DATASHEET**PAX8 Rabbit Monoclonal Antibody(ARB846)**

CAT. NO. ARB6636

DATA

Immunohistochemical staining of human serous ovarian carcinoma tissue sections negative for PAX8 using PAX8 Rabbit Monoclonal Antibody (ARB846).

Immunohistochemical staining of human thyroid carcinoma tissue sections negative for PAX8 using PAX8 Rabbit Monoclonal Antibody (ARB846).

STORAGE

Store at 4°C short term. For long term storage, store at -20°C, avoiding freeze/thaw cycles.

NOTE

For Research Use Only. Not for diagnostic, therapeutics, prophylactic or in vivo use.

More information: www.arexbio.com