

DATASHEET

PMS2 Rabbit Monoclonal Antibody(ARB844)

CAT. NO. ARB6634

KEY FEATURES

Target	PMS2	Clonality	Monoclonal
Clone ID	ARB844	Applications	IHC
Source / Host	Rabbit	Dilution	1:100-1:200
Reactivity	Human	Storage	at-20°C

BACKGROUND

Mismatch repair (MMR) proteins is a group of nuclear enzymes, which in all proliferating cells participate in repair of base-base mismatch, that occur during DNA replication. Loss of MMR proteins leads to an accumulation of DNA replication errors in the proliferating cells, particularly in areas of the genome with short repetitive nucleotide sequences, a phenomenon known as microsatellite instability (MSI).The PMS2 protein forms a heterodimer with the MLH1 protein which is then activated in the presence of ATP; this complex coordinates the binding of other proteins that repair DNA errors arising during cell preparation for cell division. The loss of PMS2 expression in tumors can be helpful in identifying hMLH1 mutation carriers and identifies their suitability for mutation analysis. PMS2 gene defects account for a small but significant proportion of colorectal cancers and for a substantial proportion of tumors with microsatellite instability.Compared to molecular biological techniques, immunohistochemical analysis of MMR protein expression is much simpler and cheaper. Immunohistochemical analysis helps to pinpoint the affected gene and should be readily accessible in a pathology laboratory.

APPLICATION

To ensure optimal assay performance, AREX recommends conducting reagent titration tailored to each testing system for optimal detection results.

IHC	1:100 - 1:200
-----	---------------

*Results are sample-specific. Please refer to your local assay conditions and test parameters for reference.

PRODUCT OVERVIEW

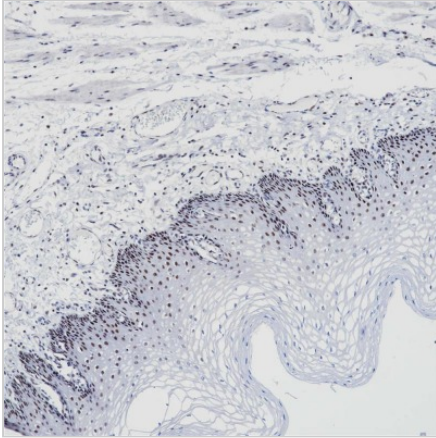
Predicted Molecular Wt	96kDa
Purification Method	ProA affinity purified IgG
Subcellular Location	Nucleus
Swissprot ID	P54278
Immunogen	Synthetic peptide corresponding to residues within aa1-100 of PMS2
Storage Buffer	PBS 59%, Sodium azide 0.01%, Glycerol 40%, BSA 0.05%
Recommended Method	Heat induced epitope retrieval with Tris-EDTA buffer (pH 9.0), primary antibody incubate at RT (18°C-25°C) for 30 minutes
Gene Symbol	PMS2

*AREX continuously optimizes our products. Webpage content may not reflect the latest updates. For inquiries, please contact info@arexbio.com or your local distributor.

*Clone Number, Reactivity, Source/Host and Clonality can be found in the product name and Key Features section above.

DATASHEET**PMS2 Rabbit Monoclonal Antibody(ARB844)**

CAT. NO. ARB6634

DATA

Immunohistochemical staining of human esophageal tissue sections for PMS2 using PMS2 Rabbit Monoclonal Antibody (ARB844). Immunohistochemical staining of human renal tissue sections for PMS2 using PMS2 Rabbit Monoclonal Antibody (ARB844). Immunohistochemical staining of human colonic tissue sections for PMS2 using PMS2 Rabbit Monoclonal Antibody (ARB844).

STORAGE

Store at 4°C short term. For long term storage, store at -20°C, avoiding freeze/thaw cycles.

NOTE

For Research Use Only. Not for diagnostic, therapeutics, prophylactic or in vivo use.

More information: www.arexbio.com