

DATASHEET

S100 Rabbit Monoclonal Antibody(ARB841)

CAT. NO. ARB6631

KEY FEATURES

Target	S100	Clonality	Monoclonal
Clone ID	ARB841	Applications	IHC
Source / Host	Rabbit	Dilution	1:100-1:200
Reactivity	Human	Storage	at-20°C

BACKGROUND

S100 is a 21kDa highly acidic and water soluble protein, which is expressed in a wide variety of normal and neoplastic cells of mesodermal, neuroectodermal, and epithelial origin. The protein is a dimer, having two subunits, alpha and beta, with extensive sequence homology. There are 3 forms of S-100 protein: alpha-alpha, known as S-100A0; alpha-beta, known as S-100A and beta-beta, known as S-100B. The immunohistochemical evaluation of S-100 (beta) protein expression is important in the diagnosis of undifferentiated malignant tumours of unknown primary origin and should be included in the so-called primary panel. S100 is a very sensitive marker for malignant melanoma of all types. S100 may be used in the differential diagnosis of sarcomas and spindle cell tumours.

APPLICATION

To ensure optimal assay performance, AREX recommends conducting reagent titration tailored to each testing system for optimal detection results.

IHC	1:100 - 1:200
-----	---------------

*Results are sample-specific. Please refer to your local assay conditions and test parameters for reference.

PRODUCT OVERVIEW

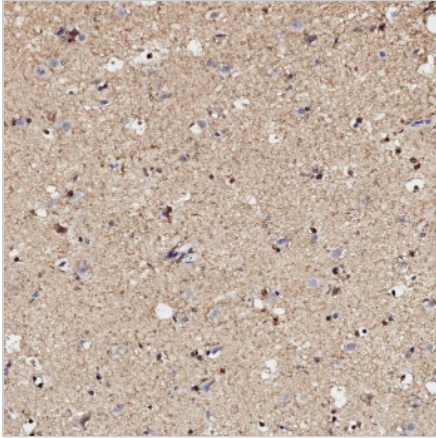
Predicted Molecular Wt	21 kDa
Purity	ProA affinity purified IgG
Subcellular location	Cytoplasm, Nuclears
Swissprot ID	P04271
Immunogen	Synthetic peptide corresponding to residues within aa50-150 of S100
Storage Buffer	PBS 59%, Sodium azide 0.01%, Glycerol 40%, BSA 0.05%
Recommended method	Heat induced epitope retrieval with Tris-EDTA buffer (pH 9.0), primary antibody incubate at RT (18° C-25° C) for 30 minutes.

*AREX continuously optimizes our products. Webpage content may not reflect the latest updates. For inquiries, please contact info@arexbio.com or your local distributor.

*Clone Number, Reactivity, Source/Host and Clonality can be found in the product name and Key Features section above.

DATASHEET**S100 Rabbit Monoclonal Antibody(ARB841)**

CAT. NO. ARB6631

DATA

Immunohistochemical staining of human brain tissue sections negative for S100 using S100 Rabbit Monoclonal Antibody (ARB841).

STORAGE

Store at 4°C short term. For long term storage, store at -20°C, avoiding freeze/thaw cycles.

NOTE

For Research Use Only. Not for diagnostic, therapeutics, prophylactic or in vivo use.

More information: www.arexbio.com